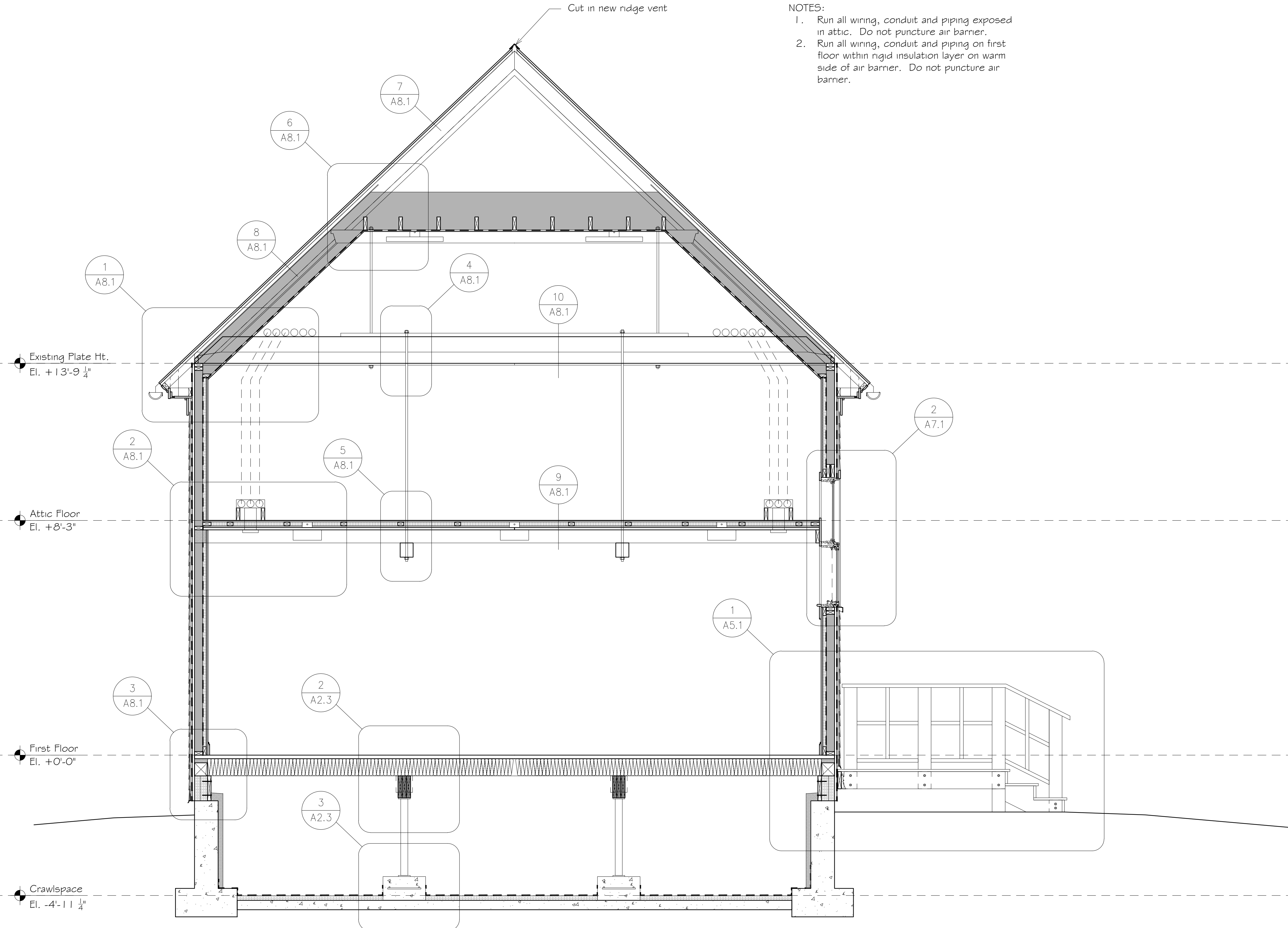
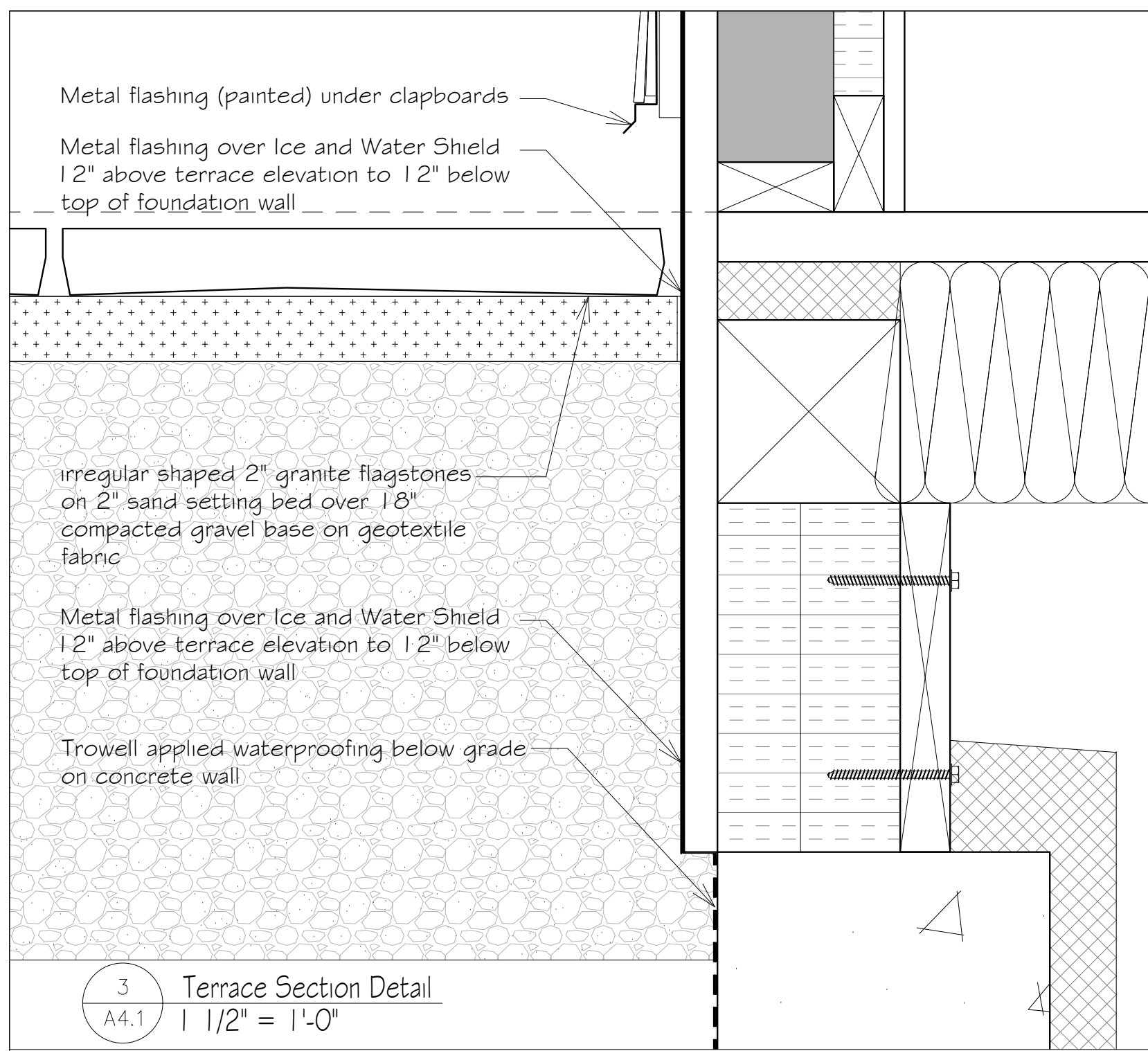
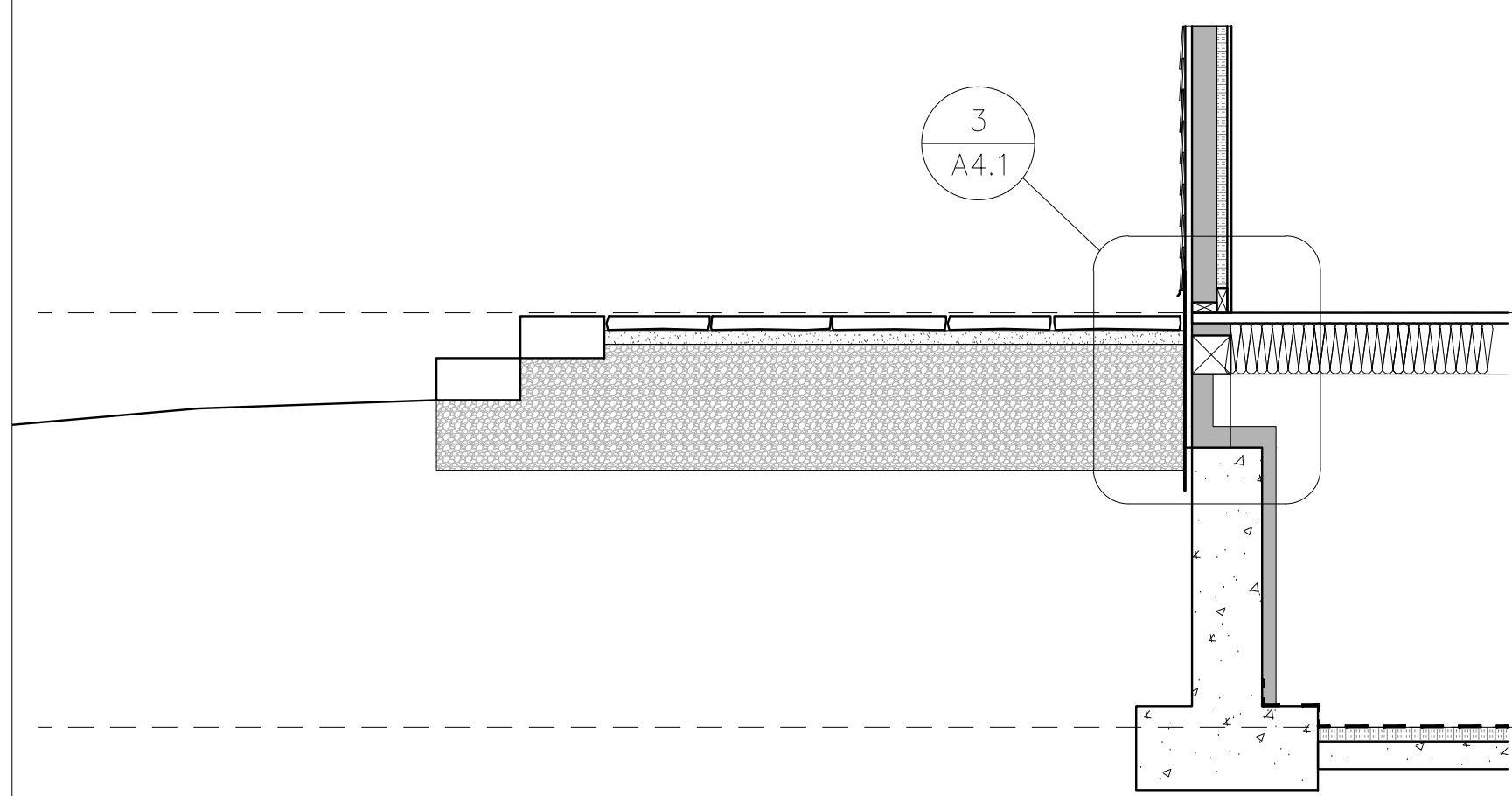


Island
Heritage Trust
420 Sunset Road
Deer Isle,
Maine

Stahnke +
Kitagawa Architects
20 Bakeman Road
Harborside, ME
207 326 8877



- NOTES:
1. Run all wiring, conduit and piping exposed in attic. Do not puncture air barrier.
 2. Run all wiring, conduit and piping on first floor within rigid insulation layer on warm side of air barrier. Do not puncture air barrier.



Building Section

SCALE:
1/2" = 1'-0" and AS NOTED

12-2-23

DRAWN BY CHECKED BY

PROJECT NUMBER

DRAWING NUMBER

A4.1