

- NOTES:
1. Roofing - Owens corning to match roofing on house prtion of the building
 2. Gutters - .032 aluminum half-round with gimble hangers. Do not locate gutter seam over doorways
 3. Downspouts 3" round .032 aluminum
 4. Match existing barn roof slope on addition (approx 12:12)

- LIGHTING FIXTURES
- A. Millenium Lighting, Rosata 4521 BG 12" round LED flush mount
 - B. WAC Lighting Aether downlight, R3ASDT-F930-HZWT
 - C. WAC Lighting Paloma, 22W monopoint luminaire, MO-LED522F-830-BK
 - D. FanLight Panasonic Whisper Green Select, FV1115VKL2
 - E. Millenium Lighting R-Series, RDBS12-RGN22-ABR
 - F. WAC Lighting, LOTOS RGERAR-W930-WT adjustable recessed downlight

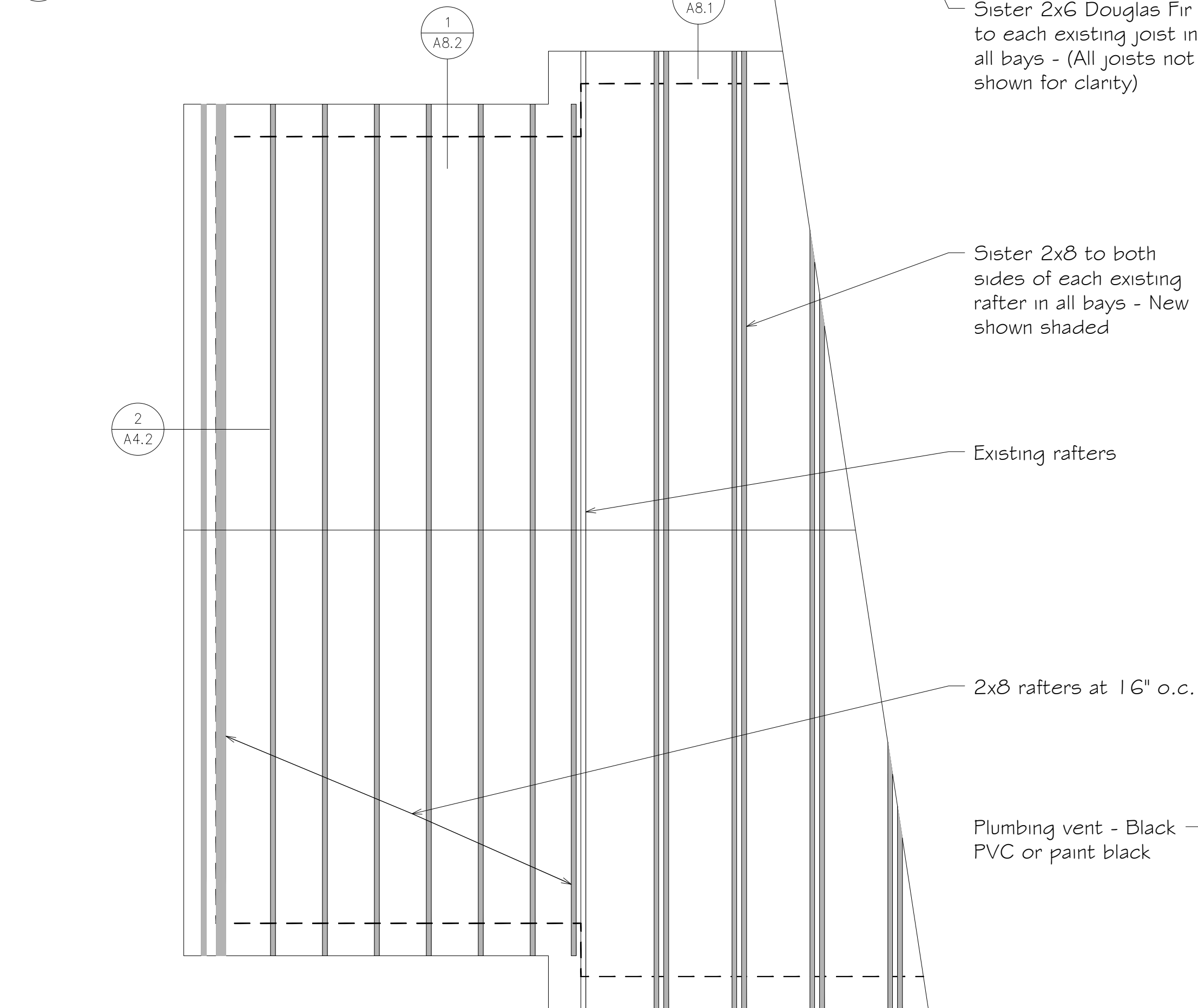
Baseboard electric in ADA Toilet:
Runtal EB3-120D 36"

Baseboard electric in Stair:
Runtal EB3-120D 48"

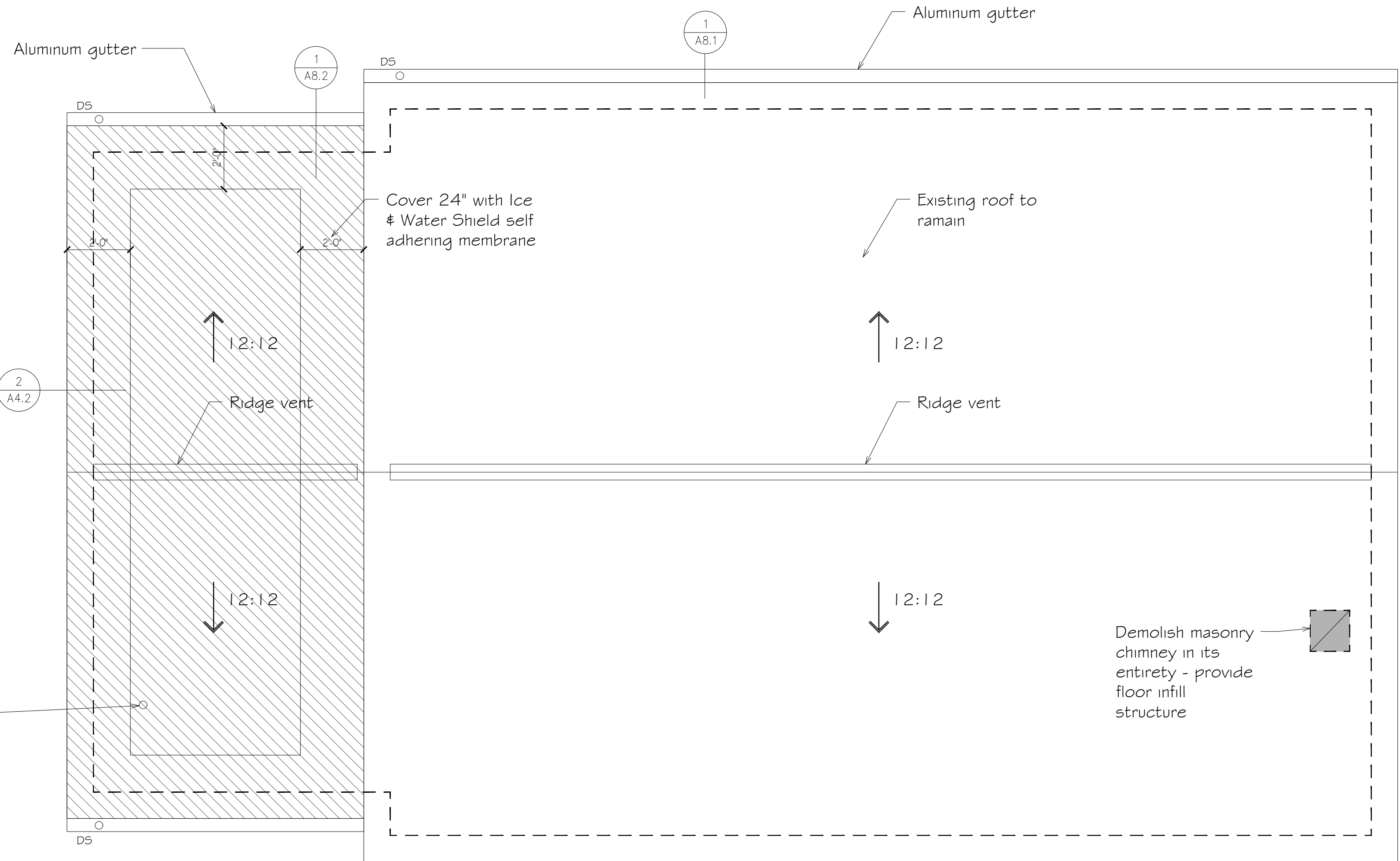
LEGEND

- Area of new roof
- Area of floor infill, Double 2x6 Douglas Fir joists and typical attic floor construction
- Infill roof structure and provide roofing to match existing

2 Reflected Ceiling Plan
1/4" = 1'-0"

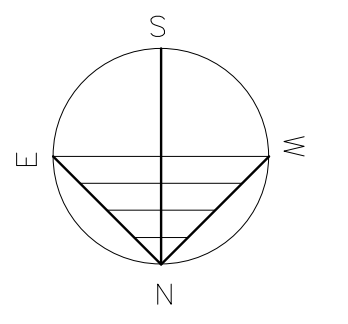


3 Partial Roof Framing Plan
1/4" = 1'-0"



1 Roof Plan
1/4" = 1'-0"

Roof Plan
Reflected Ceiling
Plan



SCALE:
3/8" = 1'-0"

12-2-23
DRAWN BY CHECKED BY

PROJECT NUMBER

DRAWING NUMBER

A2.4