



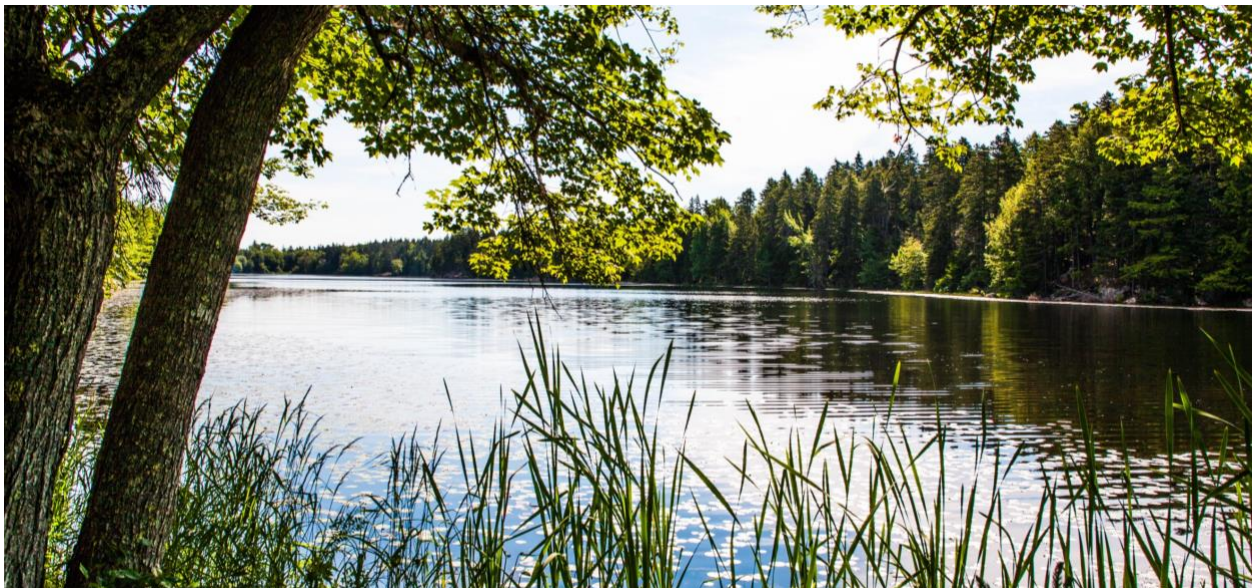
**NOAA's Restoring Fish Passage through Barrier Removal Grants Under the BIL and IRA**

A Collaborative Project to Restore Connectivity, Improve Resilience, and Improve Community Infrastructure Around the Lily Pond, Deer Isle, Maine

**SUPPLEMENTAL MATERIALS AND PROJECT DESIGNS**

**TABLE OF CONTENTS**

Area Maps.....	2
Dam Inspector’s Correspondence .....	4
Dam Emergency Action Plan Filing Confirmation .....	7
Dam-breach Inundation Maps.....	8
Engineer’s Resume .....	10
Letters of Support .....	12
Data Management Plan .....	22
Site Photographs .....	23
Project Dam/Fishway Concept Drawing .....	26
Project Alternative Firewater Supply Concept .....	27
Island Heritage Trust Annual Report 2022 (Education & Outreach Example) .....	30

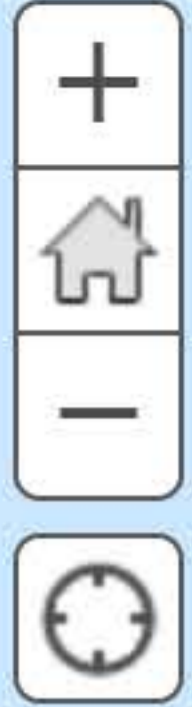




SITE LOCATION MAP  
LILY POND DAM  
DEER ISLE, ME

FIGURE 1  
JULY 2022





0 0.1 0.2mi

Dow Point

NORMAN LN

DEXTER

QUACO RD

FIRE RD 313

FIRE RD 309

FIRE RD 377

DOW RD

Lily Pond Park

Lily Pond

Fish Creek

Dam

PRESSY VILLAGE

Bridge St

Deer Isle  
Cistern &  
Culvert

Church Land Preserve

Mill Pond

Deer Isle  
Town Hall

FIRE RD 308

FIRE RD 307

BRIDGE ST

MAIN ST

KING ROW

MARSHALL RD

FREEMANSK

SUNSET RD

JOYCE RD

Conservation  
Easement

The Haulover

Conservation  
Easement

SUNSHINE RD

ACORN LN

FR 511B

FR 511

**From:** [Skelley, John](mailto:Skelley, John)  
**To:** [twurglitz@islandheritagetrust.org](mailto:twurglitz@islandheritagetrust.org)  
**Cc:** [pmiller@islandheritagetrust.org](mailto:pmiller@islandheritagetrust.org); [Ayotte, Tara](#); [Manzi, Andrew](#); [Mallory, Steven](#)  
**Subject:** RE: Lily Pond Dam Issues  
**Date:** Friday, December 20, 2019 10:27:33 AM  
**Attachments:** [Lily Pond Report - 2013.pdf](#)  
[Vegetation on Left Embankment.JPG](#)  
[Seepage Path to Spillway Outlet.JPG](#)  
[Left Embankment.JPG](#)  
[Beaver Deceiver Vegetation.JPG](#)  
[Erosion on Left Embankment.JPG](#)

---

Hi Tenley,

It was great to meet out in Deer Isle this past Wednesday 12/18 to partially inspect the Lily Pond Dam, a significant hazard dam as classified by MEMA. As you had alerted our office earlier this week, the spillway of the dam wasn't able to pass the flow from the rain event over the weekend, and the Pond was draining around the concrete spillway section. Please keep in mind that the following notes are not indicative of a formal inspection; a formal inspection will be performed in the spring of 2020 when ground cover and weather permits. Attached is an inspection email from my predecessor detailing his inspection back in 2013. Please let me know if you have any questions or need any more info.

Notes:

- The day was intermittent clouds and sun with a slight breeze, temps around 25F
- Light snow cover on the ground around the dam, and on top of the dam; approximately 2-3 inches in some places.
- The pond appears to still be at a high level from the recent rain event, freeboard averaged from approximately 0.75' to 2 feet along top of dam.
- Present: J. Skelley, A. Manzi, T. Wurglitz
- Findings:
  - Spillway
    - All immediate flow being diverted around the spillway opening had stopped, but the ground alongside the spillway outlet was still saturated
    - The concrete appeared to be in fair condition
    - It appears that the left concrete spillway wall (looking downstream from the top of the dam) may be rotating inward toward the spillway channel
    - It appears the spillway is fairly undersized, but a hydraulic analysis will need to be done in order to confirm
    - One stop log had been raised to the "open position"
    - A "Beaver Deceiver" was apparently just installed near the spillway this past year
      - Pond plants, sticks, and reeds have accumulated around the device fencing, and may be restricting drainage flow out of the spillway.
  - Right Embankment (looking downstream from top of dam spillway outlet)
    - No major issues could be seen due to snow cover, but the height of the dam appeared to only provide around a foot or so of freeboard (extra capacity to store water in relation to the top of dam elevation and the current water elevation)
  - Left Embankment (looking downstream from top of dam spillway outlet)

- The top of dam elevation varied significantly along this embankment section, probably due to historical overtopping and footpath traffic
- The embankment itself varies in width. No exact measurements were taken, but the width of embankment near the spillway is estimated to be about 10 feet, but in other sections, particularly around the middle of the embankment, the width is estimated to be only about 5-6 feet.
  - The width of the dam is important because the weight associated with the material in the dam helps resist the overturning and sliding forces that the water puts on the dam. Less material means less resistance, which means high chance of failure
- There seems to be erosion in the top of the embankment causing loss of stonework (sliding down to the drainage swale below) or loss of soil cover
- There is a drainage swale at the toe of the dam that directs runoff from the hill next to the dam into the downstream spillway channel
  - This appears to be natural
  - At the time of inspection, the ground was still wet and standing water was present. The storm had ended about 3 days prior to the inspection, so any runoff should have ceased at that time. There could also be pools of standing water as well.
  - Given the time delay between the storm and there still being water present at the toe of the dam, this is indicative of seepage through the dam. This is further reinforced by seeing what appears to be iron bacteria in the water (usually a result of groundwater interacting with minerals in the soil).
  - This seepage was noted by my predecessor all the way back in 2013
    - Remedial actions detailed in this report include reducing the water level in the pond to relieve the dam of hydraulic pressure (we discussed this actually, but at the time I did not know the history of the dam)
      - Other actions include hiring an engineer to assess the dam and recommend actions to improve the safety of the dam
      - Remove vegetation from the embankments
      - Clear vegetation and maintain clear flow paths around the spillway
    - There are a number of trees and shrubs within both embankment confines
- Recommendations: As discussed on-site please look into the following remedial actions-
  - Immediate:
    - Research and hire a qualified engineer to assess the dam and recommend courses of further remedial action
    - Remove vegetation on the embankments, including stumps where applicable (should be done under the direction of a licensed professional engineer and removing stumps within the embankment can cause instability and a proper fix to the embankment will need to be done after the stumps are removed)
    - Clear the spillway structure of debris around the Beaver Deceiver and keep the structure clear

- Potentially sandbag the outlet structure and raise low points in the top of the dam to create more freeboard in the event of high water
- Discuss with the fire chief on the island with the potential of lowering the pond even further while still having the water access for fire-fighting demand.
  - We had discussed this on site and I wasn't sure what the probability of it happening was, but after reading past inspection notes on the dam (noted as "poor" all the way back in the early 2000s) it would be prudent to lower the lake level as much as possible until further notice
- Complete the Emergency Action Plan (EAP) which is currently being worked on, and exercise it when possible. Tara Ayotte of MEMA has been providing assistance on this matter.
- Long-Term:
  - A redesign or improvement of the spillway is likely needed to pass flows of certain storm intensity and frequency
  - The left embankment structure may need a complete rebuild, but this should be determined by a licensed professional engineer

We will place the Lily Pond Dam on our monitor list and make all the effort to make trips out to Deer Isle when requested. Please do not hesitate to ask any questions, or have us visit the dam and meet with you personally if you feel you need clarification on anything.

Thanks,

**John Skelley, P.E.**

State Dam Inspector

Maine Emergency Management Agency

72 State House Station

45 Commerce Drive

Augusta, ME 04333

Desk: (207) 624-4465 | Cell: (207) 458-9556

[john.skelley@maine.gov](mailto:john.skelley@maine.gov)

---



STATE OF MAINE  
DEPARTMENT OF DEFENSE, VETERANS AND EMERGENCY MANAGEMENT  
MAINE EMERGENCY MANAGEMENT AGENCY  
72 STATE HOUSE STATION  
AUGUSTA, MAINE 04333-0072  
PHONE: 207-624-4400/800-452-8735  
FAX: 207-287-3178



PETER J. ROGERS  
DIRECTOR

STATE OF MAINE  
JANET T. MILLS  
GOVERNOR  
MAJ GEN DOUGLAS A.  
FARNHAM  
COMMISSIONER

## DAM SAFETY

March 8, 2022

Island Heritage Trust  
Attn: Alex Drenga  
PO Box 42  
Deer Isle, ME 04627

**Subject: Acknowledgment of EAP #106 Lily Pond Dam**

Dear Mr. Drenga:

Thank you for sending the updated information for the Emergency Action Plans & Notification Procedures for the Lily Pond Dam dated March 4, 2022. The EAP's will remain "current" on our database until March 4, 2024.

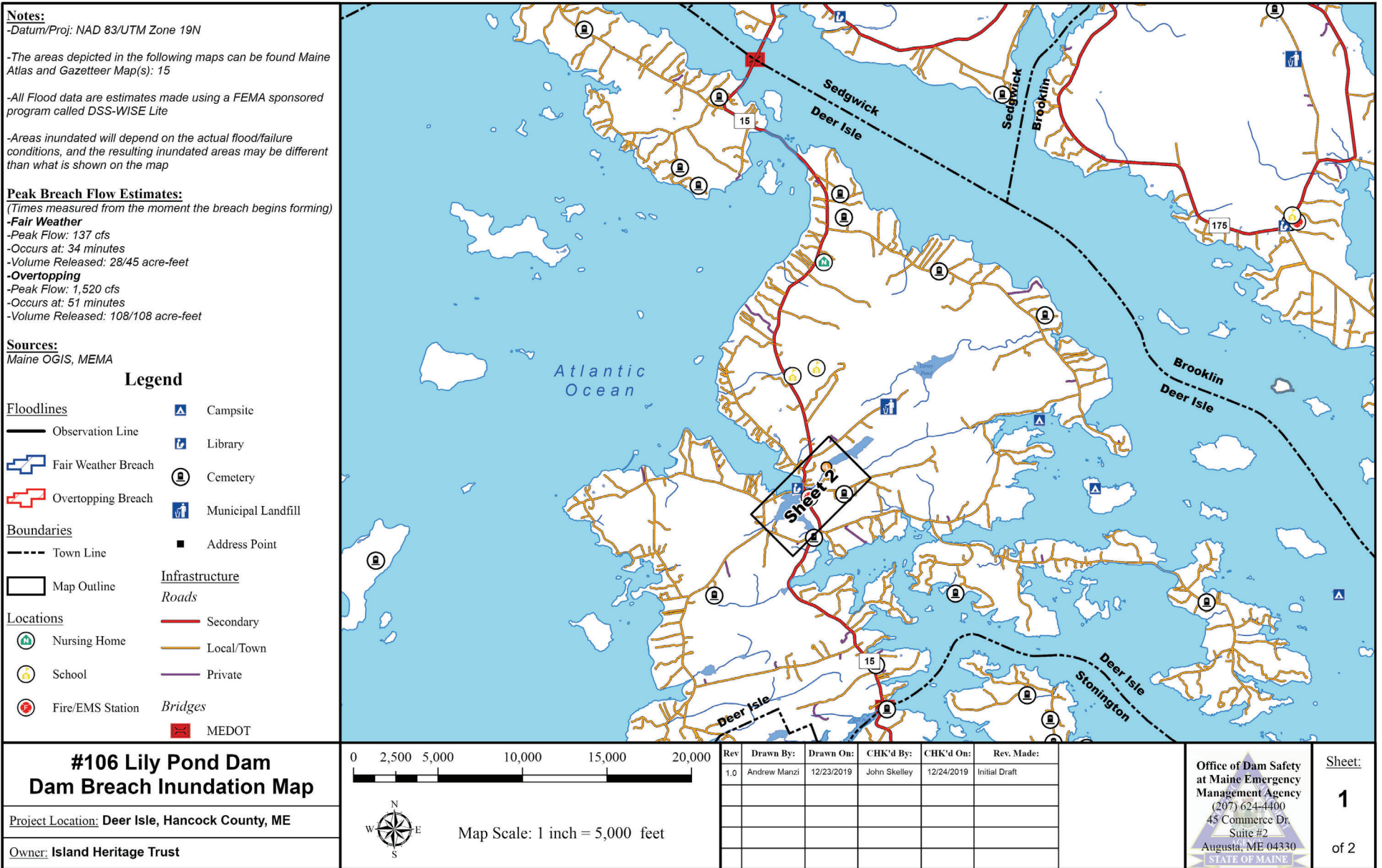
Should you have any additional updates between now and the next scheduled revision date, please notify our office immediately. Our office appreciates the efforts of all involved in public safety. I will send a reminder about the required revision prior to its expiration.

Best Regards,

Tara Ayotte  
Dam Safety Administrator

CC: Andrew Sankey, Hancock County EMA Director

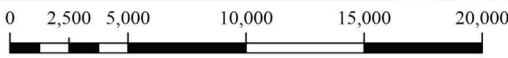
# VI. INUNDATION MAPS



## #106 Lily Pond Dam Dam Breach Inundation Map

Project Location: Deer Isle, Hancock County, ME

Owner: Island Heritage Trust



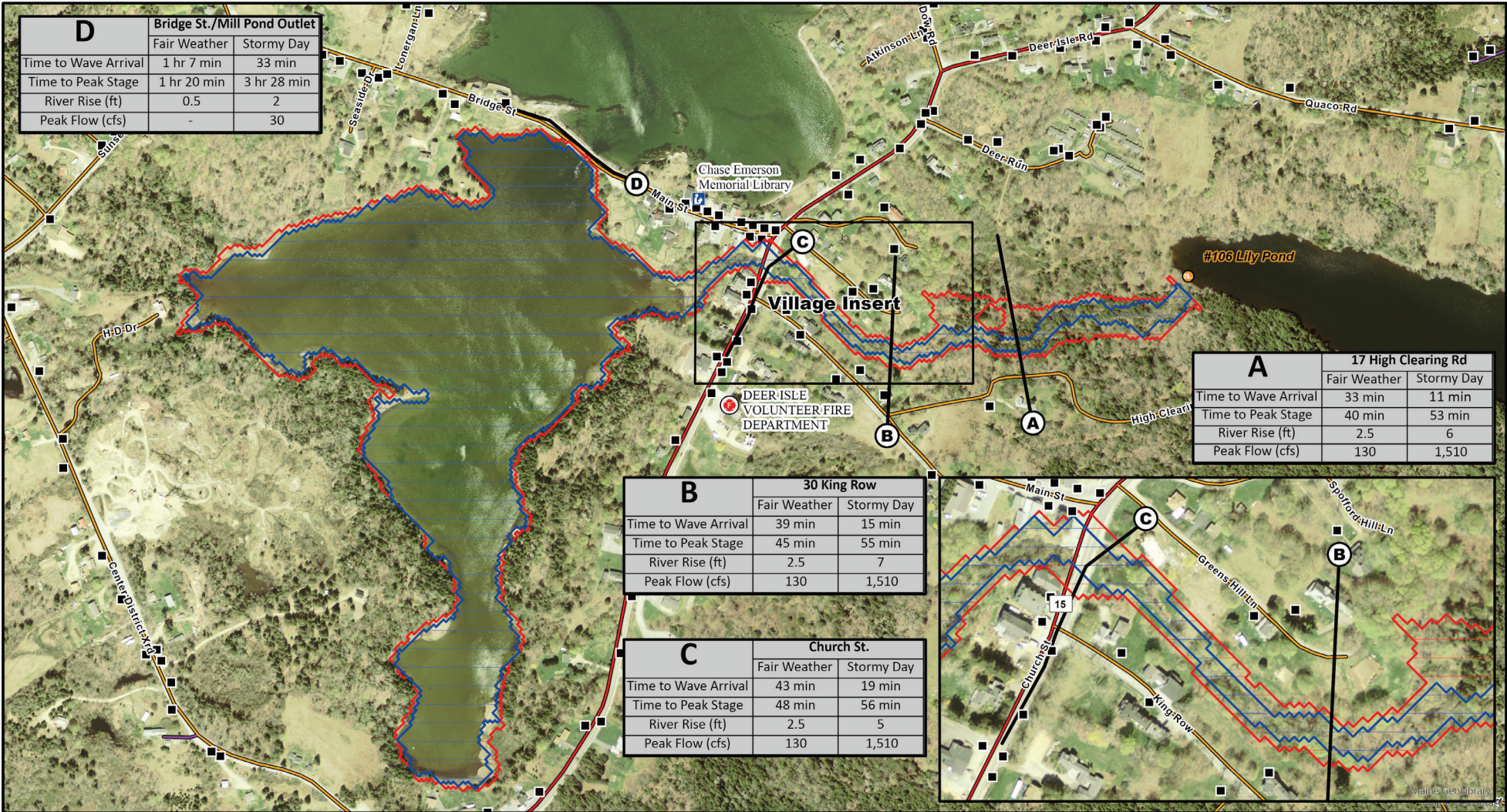
Map Scale: 1 inch = 5,000 feet

Rev	Drawn By:	Drawn On:	CHK'd By:	CHK'd On:	Rev. Made:
1.0	Andrew Manzi	12/23/2019	John Skelley	12/24/2019	Initial Draft

Office of Dam Safety  
 at Maine Emergency  
 Management Agency  
 (207) 624-4400  
 45 Commerce Dr.  
 Suite #2  
 Augusta, ME 04330

Sheet:  
**1**  
 of 2





D	Bridge St./Mill Pond Outlet	
	Fair Weather	Stormy Day
Time to Wave Arrival	1 hr 7 min	33 min
Time to Peak Stage	1 hr 20 min	3 hr 28 min
River Rise (ft)	0.5	2
Peak Flow (cfs)	-	30

A	17 High Clearing Rd	
	Fair Weather	Stormy Day
Time to Wave Arrival	33 min	11 min
Time to Peak Stage	40 min	53 min
River Rise (ft)	2.5	6
Peak Flow (cfs)	130	1,510

B	30 King Row	
	Fair Weather	Stormy Day
Time to Wave Arrival	39 min	15 min
Time to Peak Stage	45 min	55 min
River Rise (ft)	2.5	7
Peak Flow (cfs)	130	1,510

C	Church St.	
	Fair Weather	Stormy Day
Time to Wave Arrival	43 min	19 min
Time to Peak Stage	48 min	56 min
River Rise (ft)	2.5	5
Peak Flow (cfs)	130	1,510

**#106 Lily Pond Dam  
Dam Breach Inundation Map**

Project Location: Deer Isle, Hancock County, ME

Owner: Island Heritage Trust

0 200 400 800 1,200 1,600

Map Scale: 1 inch = 400 feet

Rev	Drawn By:	Drawn On:	CHK'd By:	CHK'd On:	Rev. Made:
1.0	Andrew Manzi	12/23/2019	John Skelley	12/24/2019	Initial Draft

Office of Dam Safety  
at Maine Emergency  
Management Agency  
(207) 624-4400  
45 Commerce Dr.  
Suite #2  
Augusta, ME 04330

Sheet: **2**  
of 2



# Joseph M. McLean, PE

Principal Engineer  
Licensed in ME, NH, MA, & RI

## Acadia Civil Works

Leeds, ME | 2018 – Current  
Principal Engineer  
Owner/Founder

In 2018, Joe McLean founded Acadia Civil Works with a vision to provide clients with exceptional service and value, while also designing responsible civil engineering infrastructure for the public and environment.

As the Principal Engineer and Owner of Acadia Civil Works, Mr. McLean brings two decades of civil engineering design and construction management experience to his client's projects. With a focus on water resources and environmental restoration, Mr. McLean provides sound technical expertise in the design of traditional civil engineering infrastructure for an array of municipal, state, and federal clients, as well as non-governmental organizations.

---

## Wright-Pierce

Topsham, ME | 2010 - 2018  
Senior Project Manager  
Civil Team Leader  
Associate Shareholder

- Supervise engineering staff across multiple regional offices
- Technical focus on water resources and civil infrastructure
- Management of multi-disciplinary project teams
- Mentor to junior engineering and technical staff
- Business development across northern New England

## Sebago Technics/ Technical Services, Inc.

Lewiston & Auburn, ME  
2004 – 2010  
Project Manager  
Lead Project Engineer

- Managed variety of civil, municipal, and private projects
- Lead engineering design on major site developments
- Developed internal standards on technical initiatives
- Coordinated permitting with State and Federal regulators
- Facilitated public meetings and presentations

## Gorrill-Palmer

Gray, ME | 2002 – 2004  
Project Engineer

- Assisted in assembly of technical construction specifications
- Supported project civil engineering design efforts
- Wrote technical reports and engineering memorandums
- On-site construction management for various clients

## Modern Continental Construction

Boston, MA | 1999 - 2002  
QA/QC Engineer  
Traffic Manager  
CAD Technician

- Supervised traffic management and planning efforts
- Inspected structural construction for quality assurance
- Coordinated with State and Federal Inspectors
- CAD coordination with multi-disciplinary design team
- Supported Superintendents with RFI requests and design
- Developed creative construction sequencing processes

## Tufts University

Medford, MA | Class of 2001

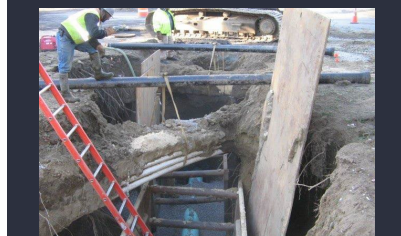
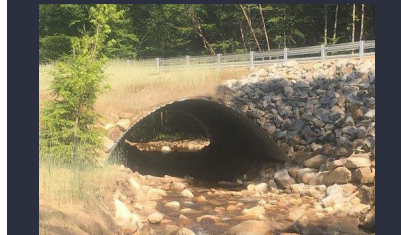
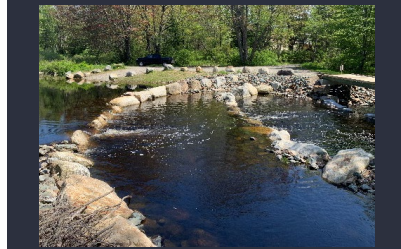
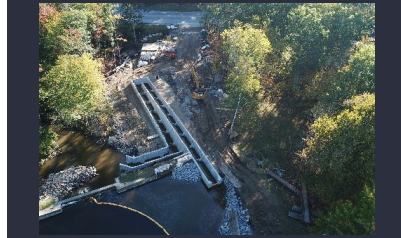
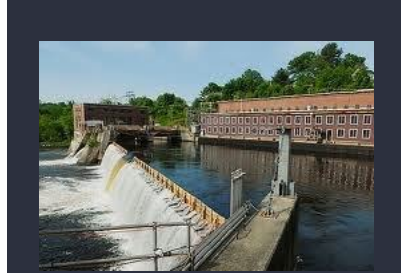
- Bachelor of Science in Civil Engineering
- President, ASCE Student Chapter
- Linebacker/Defensive End, Varsity Football
- Captain, ASCE Steel Bridge Team

---

## Accreditations

- Leadership in Environmental Engineering Design (LEED AP)
- Certified Professional in Erosion and Sedimentation Control (CPESC)
- Certified Erosion, Sediment, and Stormwater Inspector (CESSWI)

## Recent Resume Project Highlights



### Dam Evaluation, Rehabilitation, Reconstruction and Removal

- Veazie Dam Removal – Veazie and Eddington, ME
- Second Roach Pond Dam Reconstruction – Unorganized TWP, ME
- Mittersill Alpine Resort Dam Rehabilitation – Franconia, NH
- College Pond Dam Spillway Reconstruction – Weston, MA
- Old Wilton Reservoir Dam Assessment – Wilton, NH
- Pleasant Lake Dam Breach Analysis – New London, NH
- Cranberry Meadow Pond Dam Reconstruction - Peterborough, NH
- Calef Lake Dam Assessment – Auburn, NH
- Upper Dam of Martin Brook Removal – Madawaska, ME
- Wenscott Reservoir Spillway Rehabilitation – North Providence, RI
- Rainbow Lake Dam Reconstruction – Unorganized TWP, ME
- Marston Mills Dam Assessment – Barnstable, MA
- Bristol Mills Dam Assessment – Bristol, ME
- Sabattus Lake Outlet Dams Assessment – Sabattus, ME
- Marsh Stream Dam Assessment – Frankfort, ME
- Temple Stream Dam Assessment – Farmington, ME
- Durham Reservoir Dam Breach Analysis – UNH, Durham, NH

### Fish Passage and Fishway Structures

- Patten Stream “Nature-like” Fishway – Surry, ME
- Center Pond Fishway Improvements – Phippsburg, ME
- Nequasset Lake Fishway Reconstruction – Woolwich, ME
- Dresden Bog Fishway Evaluation – Dresden, ME
- Togus Pond (Lower) Dam Fish passage Improvements – Chelsea, ME
- Megantic area Ponds Fish Passage Improvements – Unorganized TWP, ME
- Middle Pond Fishway Flume Restoration – Barnstable, MA
- Long Pond Fish Passage Improvements – Barnstable, MA
- South Branch Lake “Nature-like” Fishway – Sebois, ME
- Orange River Dams Fish Passage Assessment – Whiting, ME
- Bagaduce River “Nature-Like” Fishways – Penobscot and Brooksville, ME

### Stream and Riverine Crossing Structures

- Blackstone Brook Bridge Reconstruction – Blanchard TWP, ME
- Transfer Station Bridge Replacement – Weston, MA
- Lubberland Creek Crossing Assessment – Newmarket, NH
- Crystal Brook Culvert Replacement – Mount Chase, ME
- Wallace Shore Road Marsh Restoration – Harpswell, ME
- Red Mill Lane Culvert Replacements – Rye, NH
- Thomaston Road Culvert Replacement – Rockland, ME
- Stone Box Culvert Rehabilitation – Concord, NH
- Moose Brook Bridge and Stream Restoration – Houlton, ME
- Warm Brook Culvert Replacement – Phillips, ME
- Hampshire Road Culvert Replacement – Brownfield, ME

### Municipal Infrastructure

- Southside Drainage Project – Weston, MA
- CSO Separation and Complete Streets Reconstruction – Lebanon, NH
- Spring Street Reconstruction – Hallowell, ME
- Elm and Belknap Streets Reconstruction – Dover, NH
- Main Street and Cemetery Road Reconstruction – Somersworth, NH
- Brunswick Naval Air Station Redevelopment – Brunswick, ME
- Richardson Street Flood Mitigation – Bath, ME
- Town-wide Drainage Infrastructure Assessment – Rye, NH
- Taylor Pond Outlet Evaluation – Auburn, ME



# Town of Deer Isle, Maine

---

P.O. Box 627  
Deer Isle, ME 04627  
207-348-2324

**Select Board**  
Ronald Eaton  
Peter Perez  
Percy Brown

October 5, 2023

**Staff**  
James Fisher  
*Town Manager*

To Julia Zell,

Judy Dunham  
*Treasurer*  
*Tax Collector*

The Town of Deer Isle Selectboard is happy to support the NOAA proposal by Island Heritage Trust for stabilizing the Lily Pond Dam, improving fish passage under Route 15 and creating a replacement supply of water for the fire department.

Heather Cormier  
*Town Clerk*

Lily Pond is a valuable asset to the Town of Deer Isle providing all-season recreational opportunities and an emergency water supply for our fire department. This grant will make Lily Pond more sustainable and will facilitate necessary improvements to the Lily Pond Dam.

Ed Billings  
Environmental  
Planner

Kenneth Eaton  
*Road Foreman*

This project may also serve as a model for coordinated planning and infrastructure development between Island Heritage Trust, MaineDOT and the Town of Deer Isle to pursue our multiple objectives. Please do not hesitate to contact the town if you need additional information or technical support for this initiative.

Brent Morey  
*Fire Chief*

Chris Robbins  
*Transfer Station*  
*Operator*

Sincerely,

Raelene Pert  
*Shellfish Warden*

Ronald B. Eaton

Peter P. Perez

Percy L. Brown



207-367-2351 / [www.stoningtonmaine.org](http://www.stoningtonmaine.org)

October 16, 2023

**Re: Opportunity #NOAA-NMFS-HCPO-2023-2008056**

**Application title: A Collaborative Project to Restore Connectivity, Improve Resilience, and Improve Community Infrastructure around Lily Pond, Deer Isle Maine**

To whom it may concern,

On behalf of the Town of Stonington, Maine, we offer this Letter of Support for Island Heritage Trust's project to remove two barriers and to rehabilitate the Lily Pond Dam to restore aquatic connectivity from the Lily Pond to the Mill Pond.

This project benefits our entire island community in multiple ways, and we are grateful for the opportunity to address these issues and to improve community infrastructure and resilience.

The Lily Pond is one of the island's most beloved recreational assets. Island residents and summer visitors alike flock there to enjoy swimming, fishing, walking, and ice skating through the year. Rehabilitating its ancient and deteriorating dam in order to install a nature-like fishway provides unparalleled community benefit on its own merits.

In addition to the dam, this project includes replacing the undersized culvert beneath the island's primary transportation corridor that connects this fish passageway to its outlet. Replacement of this culvert will not only improve fish passage but also create needed resilience for State Route 15 in light of the more frequent and severe storms and flooding we experience due to climate change. This work also includes long overdue replacement of an aged firewater supply system which is currently one of the barriers to aquatic connectivity.

Our primary transportation corridor, State Route 15, is a vital economic lifeline for Stonington – Maine's #1 Lobster Port in value and amount of landings. Multiple truckloads of lobster, as well as granite quarried from Stonington's Crotch Island, transit this corridor daily getting our product to market and bringing labor to our harbor. It is part of our Economic Resiliency Strategy, adopted in June 2023, to maintain this infrastructure for safe, all-weather passage.

Together, these four different actions improve fish passage and provide benefits to our entire community. Thank you for this opportunity to support these impactful efforts. We look forward to further discussions.

Most sincerely,

Linda L. Nelson, Economic & Community Development Director, Town of Stonington

*Linda L. Nelson*



September 22, 2023

NOAA Grant Review Committee

Re: Proposal by Island Heritage Trust at Lily Pond, Deer Isle, Maine

To Whom it May Concern:

I write this letter to express the enthusiastic support of Maine Coast Heritage Trust for the application to funding opportunity NOAA-NMFS-HCPO-2023-2008056 for Restoring Fish Passage Through Barrier Removal, by Island Heritage Trust for the Project entitled: A Collaborative Project to Restore Connectivity, Improve Resilience, and Improve Community Infrastructure around the Lily Pond, Deer Isle Maine.

Led by the local land trust on this coastal island community, this project is centered around removal of an existing earthen dam barrier and involves a multi-year, multi-step plan to restore the health and connectivity of the entire stream and pond system. Because the stream runs under a state route and through a village center, this project involves many community stakeholders and will provide community and economic benefits including improved transportation safety and infrastructure resilience; and improved fire safety infrastructure resilience and access for all of the residents of these coastal island towns. This project builds on years of proactive conservation work around Lily Pond -- not only important ecologically as one of the few freshwater ponds on this coastal island, but also a beloved community recreation destination for swimming and ice skating.

Maine Coast Heritage Trust is pleased to play a partner role in this effort. MCHT partnered in the conservation efforts around this pond for two decades, and has been involved since the early days of this barrier removal project by providing staff time and technical advising to Island Heritage Trust, which we plan to continue.

I hope that you will not hesitate to contact me if additional information is needed or with any questions.

Sincerely,

A handwritten signature in blue ink that reads "Ciona S. Ulbrich". The signature is written in a cursive style.

Ciona S. Ulbrich  
Senior Project Manager

**James A. Saltonstall**  
1045 North Road      895 Southern Bay Road  
Carlisle, MA 01741      Penobscot, ME 04476

NOAA Grant Review Committee

October 12, 2023

Re: Proposal by Island Heritage Trust (IHT) at Lily Pond, Deer Isle, Maine

To Whom it May Concern:

I write this letter to express the enthusiastic support of the Bagaduce Watershed Association for the application to Restore Fish Passage Through Barrier Removal, submitted by Island Heritage Trust and identified as NOAA-NMFS-HCPO-2023-2008056. This project is entitled: A Collaborative Project to Restore Connectivity, Improve Resilience, and Improve Community Infrastructure around the Lily Pond, Deer Isle, Maine.

I understand that Island Heritage Trust (IHT) in Deer Isle, Maine is proposing this project to restore fish passage from Northwest Harbor into Lily Pond via Eel Creek on Deer Isle. Further, I understand that IHT has been using some of the work recently completed in the nearby Bagaduce River watershed as a model.

I am writing as the current President of the Bagaduce Watershed Association. I have followed and supported the series of projects in the Bagaduce watershed that have resulted in the Bagaduce being the first “accessible” river in Maine to river herring, trout, other fish and eels. This work, coordinated by Maine Coast Heritage Trust and Blue Hill Heritage Trust, involved the removal of several dams, improving fishways and providing a source of pond water to use as needed by local fire departments. My understanding is that the proposed Lily Pond project will have similar goals.

Not only has the Bagaduce project fully restored fish passage, but it has generated considerable community support. Members of the Blue Hill Peninsula communities have rallied around the Bagaduce projects – they followed the construction, they “checked out” the work and many individuals have volunteered to “count alewives” in the last few years to verify the increases in fish passage. Our local news media have also “advertised” the whole process to keep community members informed and involved. These projects have been a real source of pride in our communities.

I wish the same for the Deer Isle community.

Sincerely,

*James A Saltonstall*

James A. Saltonstall, President, Bagaduce Watershed Association



## LETTER OF SUPPORT

October 13, 2023

Melanie Gange  
NOAA Office of Habitat Conservation  
Melanie.Gange@noaa.gov

Dear Ms. Gange,

I am writing on behalf of the Downeast Salmon Federation in support of Island Heritage Trust's (IHT's) Restoring Fish Passage Through Barrier Removal Grant application for *A Collaborative Project to Restore Connectivity, Improve Resilience, and Improve Community Infrastructure around Lily Pond, Deer Isle Maine*. Lily Pond is a 37-acre freshwater pond situated in a 297-acre watershed. Most of its shoreline is currently undeveloped, but development pressures persist. It is regularly stocked by the Maine Department of Inland Fish and Wildlife with Brown and Brook Trout and is highly valued by local anglers. Apart from presumed American eel migration, the existing barriers are a complete block to the other Target Species. This watershed is located within the USFWS Atlantic Salmon DPS and NOAA's Penobscot Watershed Habitat Focus Area (HFA).

This project is primarily focused on alewife, sea-run rainbow smelt, sea-run brook trout, American eel, and forage fish population restoration and sustainability. Removal of these barriers would restore access to freshwater refuges and spawning habitats for target species populations. The Town of Deer Isle is coordinating with the Maine State Department of Transportation to replace the narrow culvert passing under Route 15. In addition to improving infrastructure resilience to the effects of sea level rise, the project will remove two complete barriers to migratory fish passage from the Mill Pond to the Lily Pond, ultimately freeing a complete watershed to allow fish passage through Northwest Harbor to Penobscot Bay.

The Downeast Salmon Federation's mission is to conserve wild Atlantic salmon, other sea-run fish and their habitats, restore a viable recreational salmon fishery, and protect other important river, scenic, recreational, and ecological resources in eastern Maine.

Sincerely,

A handwritten signature in black ink, appearing to read 'Dwayne Shaw', is written over a light blue horizontal line.

Dwayne Shaw  
Executive Director



October 13, 2023

The Maine Center for Coastal Fisheries would like to express its support for the Island Heritage Trust (IHT) Project to restore connection between Lily Pond and the marine environment.

IHT is working on this project because it is something that the community cares about and knows the benefits of doing this kind of work. This work is in line with the “bottom up” approach that is MCCF supports, where work is led by the communities that are harmed by disconnected systems and that will benefit once they are connected.

MCCF will support this project in any way that it can, through letters of support, but also in work to help build a coalition and a plan around post restoration monitoring that IHT plans to undertake to show the true benefits of this work.

This work will be part of community, regional and statewide work to look at sustainability and infrastructure and ecosystems in the same view and to take a holistic look at our collective futures.

We stand beside our partner IHT in this work and very much recommend it for funding. Please reach out with any questions.

Sincerely,



Mike Thalhauser  
Collaborative Management Specialist

---

**Alexa M. Dayton, PhD • Executive Director**  
**MCCF Board of Directors**

Joan Sorensen, Chair • Dave Thomas, Vice Chair • Charles Rudelitch, Treasurer • Jane Osborne, Secretary  
Marsden Brewer • Michelle Carter • Dwight Carver • Elizabeth Jewett • Nancy Knowlton  
James Markos • Sarah McCloskey • Dana Morse • David Tarr • Carl Wilson

October 13, 2023

NOAA Grant Review Committee

Re: Proposal by Island Heritage Trust at Lily Pond, Deer Isle, Maine

To Whom it May Concern:

I am writing to express the enthusiastic support of Downeast Trout Unlimited (DETU) for the application to funding opportunity NOAA-NMFS-HCPO-2023-2008056 for Restoring Fish Passage Through Barrier Removal, by Island Heritage Trust for the Project entitled: A Collaborative Project to Restore Connectivity, Improve Resilience, and Improve Community Infrastructure Around the Lily Pond, Deer Isle, Maine.

Downeast Trout Unlimited (DETU) is a local chapter of Trout Unlimited, a national conservation organization with over 400 chapters and state councils, whose mission is to protect, conserve, and restore native cold water fish species and their habitat. DETU partnered with Island Heritage Trust earlier this year to provide brook trout fishing and flytying demonstrations and educational activities for area youth on Lily Pond. Maine has the largest remaining population of native Brook Trout in the United States as well as the largest number of sea-run brook trout in the country. Lily Pond has been known to support a Brook Trout population; DETU is extremely interested in providing connectivity to the ocean on coastal streams, thus increasing access to the ocean for Brook Trout. This project, in addition to improving coastal Brook Trout habitat, will increase the opportunity for educational and recreational activities for residents young and old in Downeast Maine.

Sincerely, *Robert Packie*

Robert Packie, President  
Downeast Chapter, Trout Unlimited  
[rbpackie@gmail.com](mailto:rbpackie@gmail.com)  
PO Box 117 Hulls Cove, ME 04644



October 12, 2023  
NOAA Grant Review Committee  
Re: Proposal by Island Heritage Trust at Lily Pond, Deer Isle, Maine

To Whom it May Concern:

I write in support of Island Heritage Trust's pursuit of application to federal funding opportunity NOAA-NMFS-HCPO-2023-2008056 for Restoring Fish Passage Through Barrier Removal, for the project entitled: *A Collaborative Project to Restore Connectivity, Improve Resilience, and Improve Community Infrastructure around Lily Pond, Deer Isle Maine.*

I have taught at Deer Isle Stonington Elementary School since 2011 and I am a fervent believer in embedding outdoor learning into the school culture. I have brought my students to the Lily Pond Park every school year since. I have also visited the park with the Nature Club from our After School Program. This park has given us opportunities to observe and record the phenology of the area as well as tree identification and issues involving invasive species. I am excited at what this project will provide for new learning opportunities on Deer Isle.

Island Heritage Trust seeks to rehabilitate the Lily Pond Dam and remove two complete barriers to fish passage within Lily Pond's watershed. With the success of this project, students will visit the pond to learn about the importance of aquatic connectivity and the widespread benefits of freeing a complete watershed. This project will resonate with these children as many recreate at the pond and picnic area with their families and friends throughout the year. Once this project is funded, school children will engage in educational programming and monitoring efforts. By allowing the children to be involved in this restoration project from the beginning, they will better understand the value and importance of the Targeted Species, the ecosystems they call home, and the ripple effects supporting a resilient community.

Studies at Stanford University demonstrated that environmental education has led to a number of positive impacts, from improving academic performance to enhancing critical thinking skills to developing personal growth and life-building skills including confidence, autonomy, and leadership. In addition, it was shown that environmental education increased civic engagement and positive environmental behaviors. (<https://naaee.org/programs/eeworks/benefits-k12-students>)

Please contact me ([mflores@dises.org](mailto:mflores@dises.org) 207 460-6038) for details on past and current projects the students and I have undertaken. We would be pleased to add this project to our efforts.

Mickie Flores  
*Mickie Flores*  
Science Teacher



WILLIAM J WIEGMANN  
9 North Wind Lane  
Deer Isle, ME 04627

NOAA Grant Review Committee

Re: Proposal by Island Heritage Trust at Lily Pond, Deer Isle, Maine

To Whom it May Concern:

I write this letter to express my enthusiastic support for the application to funding opportunity NOAA-NMFS-HCPO-2023-2008056 for Restoring Fish Passage Through Barrier Removal, by Island Heritage Trust for the Project entitled: A Collaborative Project to Restore Connectivity, Improve Resilience, and Improve Community Infrastructure Around the Lily Pond, Deer Isle Maine.

I have been a resident of the Town of Deer Isle for 16 years. After retiring from practicing law for almost 30 years, I have mostly been engaged in volunteer work on the Island: I volunteer as an EMT for our local ambulance service and serve as President of its Board of Trustees; I am chairing the Steering Committee for the Comprehensive Plan for the Town of Deer Isle; and I am a member of the Board of Trustees of Island Heritage Trust and Chair of its Land Committee. I have been closely involved in addressing the issues arising out of the potential failure of the Lily Pond Dam and the proposed rehabilitation solutions.

The Lily Pond is an essential resource for the Island community, and Island Heritage Trust is proud to have played a key role in securing its benefits for future generations. Innumerable residents have told me how much they value the Pond: how they have fished or ice skated on it, learned to swim there, hiked its trails or just enjoyed taking their children to the Pond's beach area. There are no other comparable freshwater resources on the Island readily accessible to all. Rehabilitation of the Lily Pond Dam is essential to the continued use and enjoyment of the Pond by the public. Restoration of fish passage would be an ecological boon to not only the Lily Pond, but also Eel Brook, the Mill Pond and Northwest Harbor.

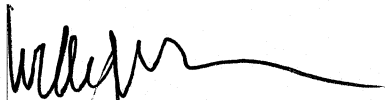
Route 15 is a lifeline for the Island economy. The daily catch from the largest lobster port in Maine reaches the world by this route. Alleviating the risk of the road's destruction from a Dam failure or other extreme weather event would benefit the entire Island and region.

The Deer Isle Fire Department is a volunteer force that does an outstanding job protecting Islanders from fire risks and other public safety threats. The risk of fire may well increase if climate change leads to less rainfall or more lightning storms, for example. The Department's efforts to protect the public are hampered by the inadequacies of the current fire water cistern at Route 15. A new fire water system drawing on the Lily Pond waters could save lives and property.

As Chair of the Steering Committee for the Deer Isle Comprehensive Plan, I can also report that the current draft plan includes support for Island Heritage Trust's reconstruction of the Lily Pond Dam, upgrading the Fire Department's fire water system and review of the Lily Pond as a potential future drinking water source. The draft plan also identifies the Route 15 culvert and cistern as fish passage barriers and recommends that the Town explore grant funding for improvements. The draft plan is subject to modification as a result of public comments and review by the State Department of Agriculture, Conservation and Forestry.

Please feel free to contact me if I can be of any assistance in your consideration of the Island Heritage Trust's application.

Very truly yours,



William J. Wiegmann  
(H) 207-348-2714  
(C) 207-610-4007  
williamwiegmann@msn.com

## DATA MANAGEMENT PLAN

Island Heritage Trust will ensure all records are managed in accordance with its board-approved records policy. This policy states that all project files be maintained permanently, and data from this project will be filed with the Lily Pond Park project files.

**Collaborative Project to Restore Connectivity, Improve Resilience, and Improve Community Infrastructure Around the Lily Pond, Deer Isle, Maine**, implemented by Island Heritage Trust (IHT) and partners will generate environmental data and information, including topographic survey data, fish passability and species appearance data through an underwater camera and citizen science projects, as well as counts of volunteers and tracking of any press or events in the community, which the Applicant, Island Heritage Trust, will ensure is shared with NOAA, with project partners, and with the Town Government of Deer Isle, thereby making the data part of the public records which are and will be available to the public at the Town office. In addition, one public informational meeting on this project has already been held, at which designs and data will be shown, shared, and made available. Data will be gathered by a number of project partners and volunteers, but the Applicant will serve as the point to ensure that it is properly documented and made accessible.

The information already captured in the initial design plans is available on IHT's website, has been given to Town Selectmen, and will be available on file in public records available at the Town of Deer Isle Town office and gladly available to NOAA upon request. With this being a project with town involvement, the project reports and steps will very much be in the public eye.

The information to be gathered will include topographic and bathymetric/transect data gathered using standard survey techniques, recorded electronically and in field notebooks. Fish passage and habitat utilization data (presence of and passage by target species) will be generated by a combination of volunteer counters, video monitoring, and electrofishing. All data will be collected with field data sheets and, when possible, electronically. All non-electronic data will be transcribed into spreadsheets and stored electronically. Topographic and bathymetric data will be incorporated into reports by contractors, and those reports will be on file at the town office and available to the public.

The Applicant plans to engage The Nature Conservancy and US Fish and Wildlife to conduct pre/post stream simulation surveys to capture changes to the stream resultant from the dam rehabilitation, fishway installation, and removal of the barrier and culvert replacement. Tracking the resultant changes to stream bedform and substrate size class distribution allows TNC to directly compare the proposed design to the as-built projects and assess how the slope and substrate of the crossing naturalizes over time, an effective assessment of how a stream responds to the installation of aquatic organism passage designed road/stream crossings.

This data will be kept with the other data within the NOAA Habitat Blueprint Focus Area as part of the effort to rebuild the Penobscot River Watershed, as well as made available to the Applicant and the Town of Deer Isle within one year of each stage of the data being gathered.

Data will be made available on an ongoing basis as it is received or collected. As mentioned, most, if not all, of the data will be shared with the community in public meetings and with interested parties, as well as on file at the Town Office in Deer Isle, as part of the community and partner engagement. Data will also be included in grant reporting to NOAA and can also gladly be requested of the Applicant's point person, Julia Zell, at [jzell@islandheritagetrust.org](mailto:jzell@islandheritagetrust.org) or (207) 348-2455.



< On the dam crest facing NE. Current undersized spillway and walkway with beaver deceiver pipe and structure inflow. Sandbags have been placed around sites of previous over-topping. Photo by Joe McLean.



Looking at the outflow side of the spillway and to the sandbags around a "boil" downstream. Photo by Joe McLean >



^ Family attends "Family Fishing Day" held at the Lily Pond on open fishing weekend: June 3-4, 2023. Raffle prizes included push-button rods and one grand prize life-time fishing licesne sponsored by Sportsman Alliance of Maine. Maps of IHT preserves and our Engineer's scope and assessment report were available to view. Photo by IHT staff.



< IHT Stewardship Director, Alex Drenga, teaches a "Family Fishing Day" attendee how to fish at the Lily Pond. Photo by IHT staff.





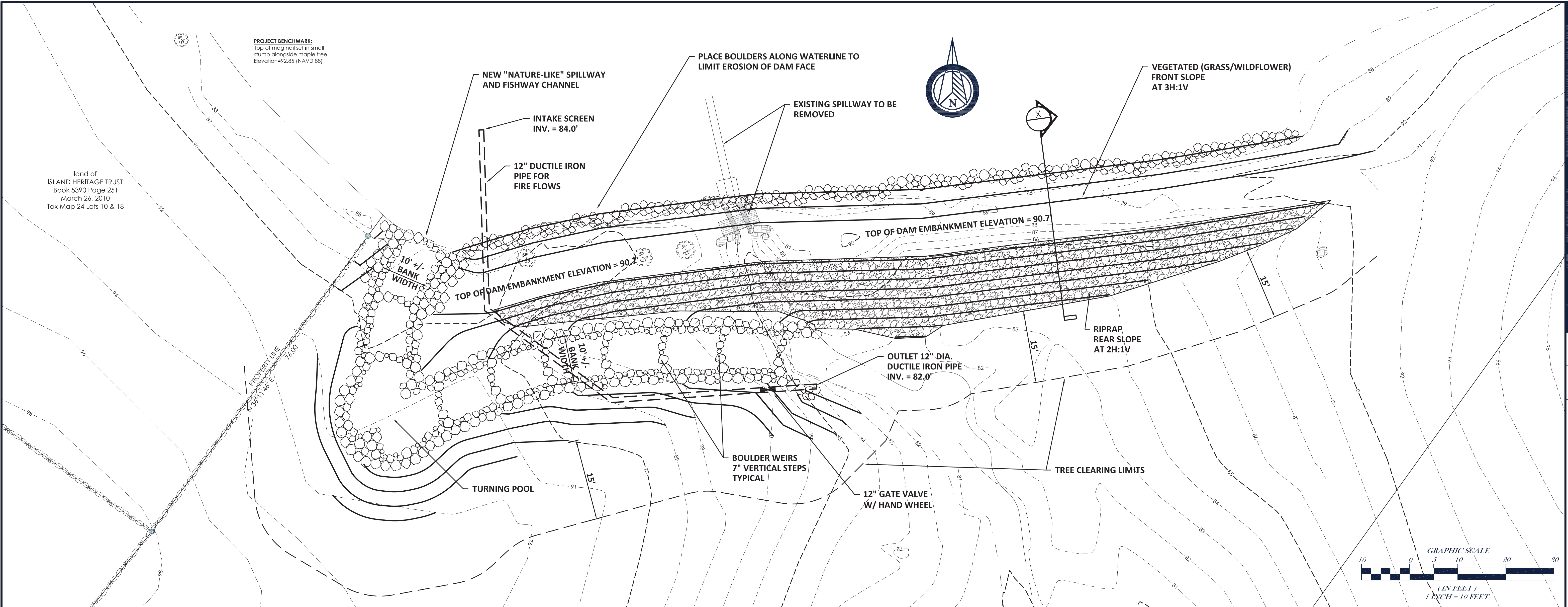
< SW side of Route 15 with the firewater cistern and access hatch. Photo by Joe McLean.



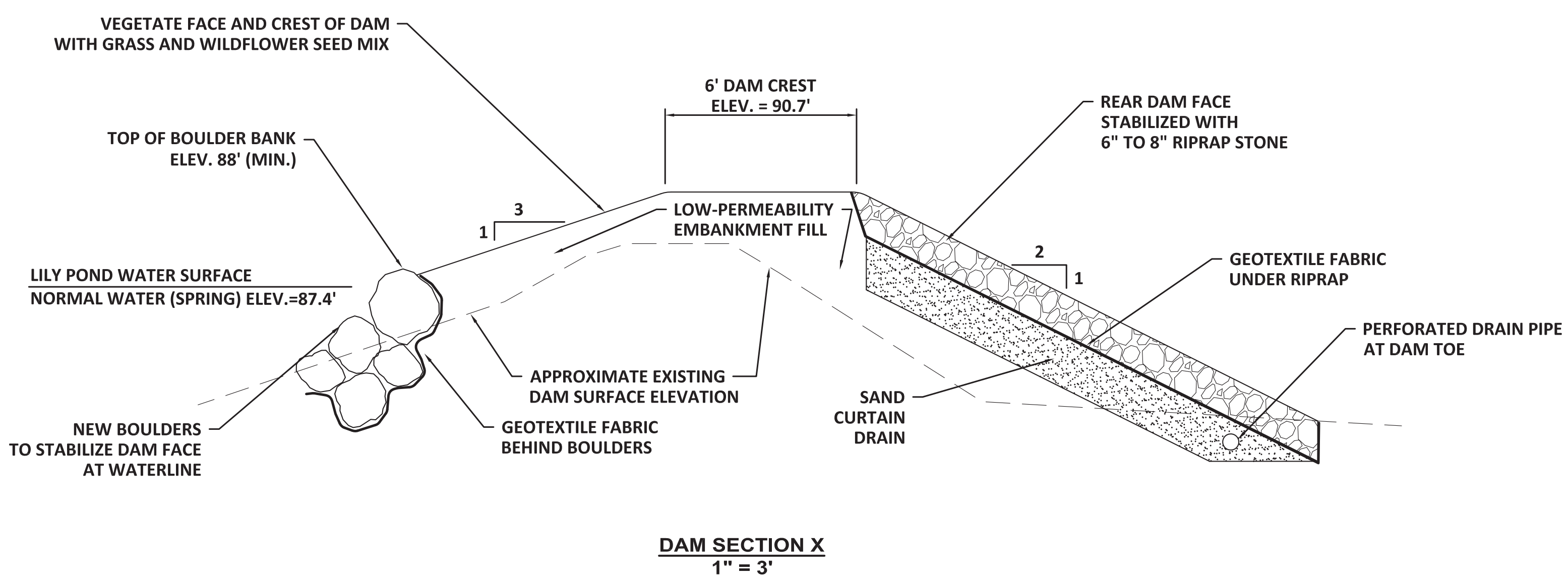
<NE side of the Route 15 culvert, currently undersized for the stream. Photo by Joe McLean.

land of  
ISLAND HERITAGE TRUST  
Book 5390 Page 251  
March 26, 2010  
Tax Map 24 Lots 10 & 18

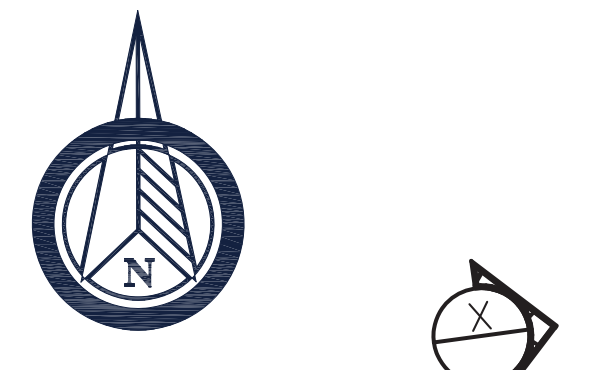
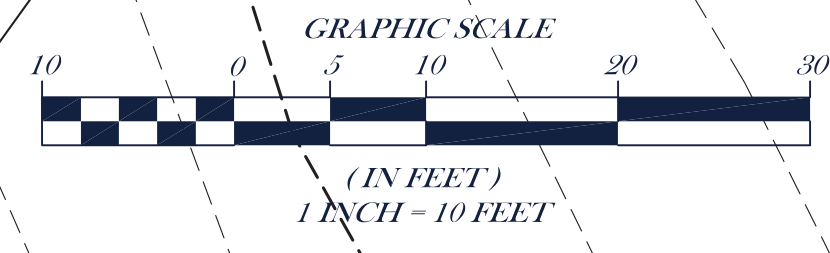
**PROJECT BENCHMARK:**  
Top of mag nail set in small  
stump alongside maple tree  
Elevation=92.85 (NAVD 88)



**PLAN VIEW OF DAM**  
1" = 10'



**DAM SECTION X**  
1" = 3'



**PROGRESS PRINT**  
**PRELIMINARY**  
**08/28/2022**

(207) 212-9330  
PO Box 212  
Leeds, Maine  
acadiacivilworks.com

**ACW**  
ACADIA CIVIL WORKS  
ENGINEERING CONSULTANTS

NO.	REVISION	APP'D	DATE

LILY POND DAM  
DAM AND FISHWAY ASSESSMENT  
DEER ISLE, ME  
ISLAND HERITAGE TRUST  
CONCEPT A - "NATURE-LIKE"  
MAY 2022

**ACW**  
DRAWING  
**SK-A**

# DEER ISLE PROPOSED WATER SUPPLY

## Details 08/06/2023

### EXPLANATION - DETAILS

At the Deer run site along the entrance drive where the power lines pass over the road Versant owns several acres of property. At the head of the pond Heritage Trust and Haskell Family own access to the pond. The concept of this design involves this area and is as follows;

At the pond a 6" intake pipe would be extended out into the pond far enough to always be below lake traffic and high enough off the bottom to never silt up, at the end of the pipe would be a screen / filter, the pipe would be installed below grade to prevent any freeze up during cold seasons, and exit into a small pump house which would house the electrical controls, valves for emergency hook up to a fire truck or portable pump in a case of power outage or equipment break down, and controls for water level at the storage tanks and a heat source and alarms to prevent freeze up.

Water would flow from pump house #1 downhill via a buried water line to pump house #2 along side of an electrical conduit which would supply pump house #1 with power for the pump and control switching for tank level. Pump house #2 would house the electrical service (100a / 3ph) the control level equipment for the tanks, and valves for emergency hook-up to a fire truck pump or a portable pump in case of an power outage or breakdown.

Incoming water would pass through to tank #1 and a suction tube in tank # 1 would be connected to a 250 gph electric pump, this pump would supply 1 or 2 fittings connected to the outside of the building which would refill tankers as necessary (approximate 6 min per tanker)

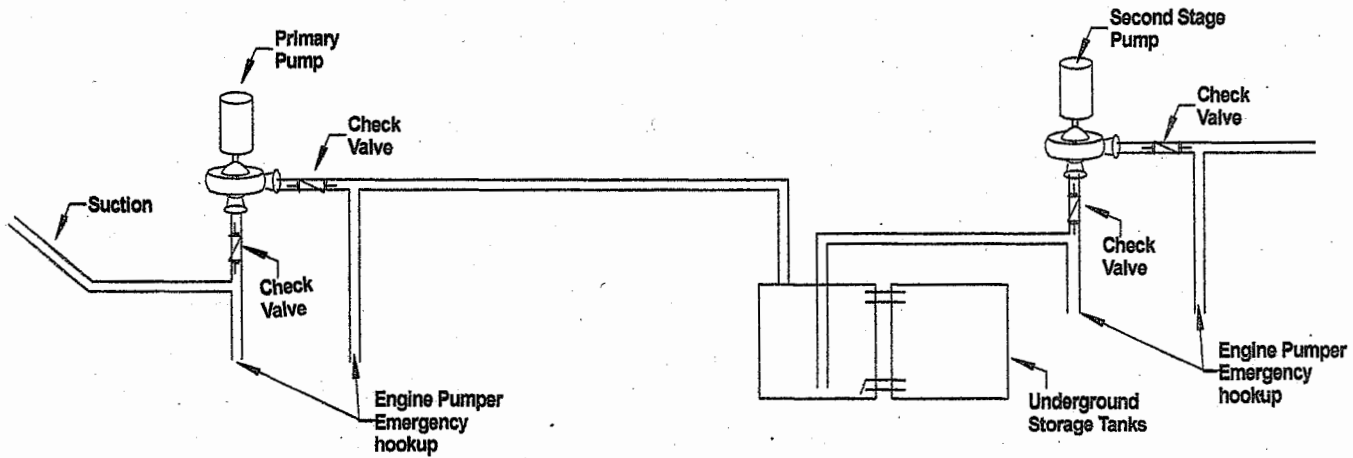
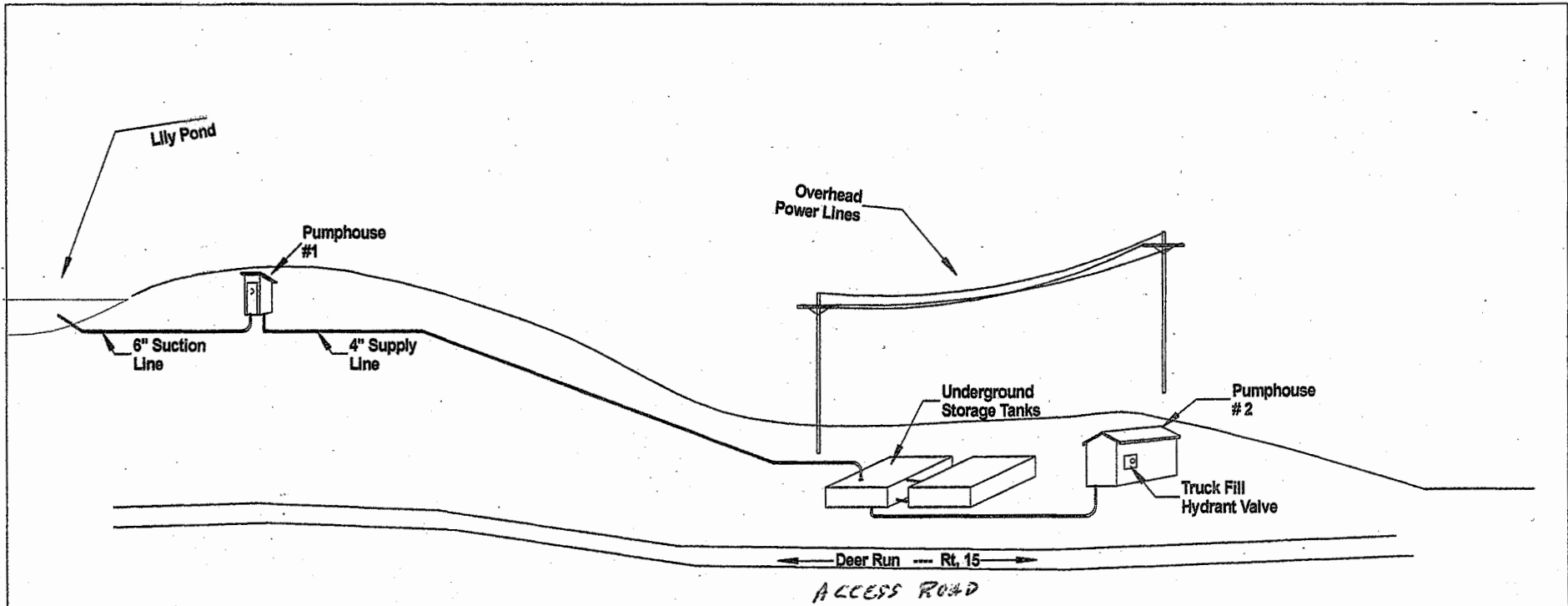
Tank1, the first to fill, has a flapper valve at the bottom to prevent water from flowing from tank1 to tank 2 at that level, there is an over flow at the top between the two tanks that allows them to equalize. when both tanks are full the pipe at the bottom will allow both tanks to drain equally until tank 1 starts to recover. tank 1 will tell pump 1 at the pond house to maintain a constant full level

Building #2 would house the electrical service and the controls for both pumps and the tank water level. it would need to be heated ( 50 deg.) possibly a heat pump that could be run with a small portable generator in case of an emergency, and would be placed close enough to the drive to allow trucks to pull up along side to fill

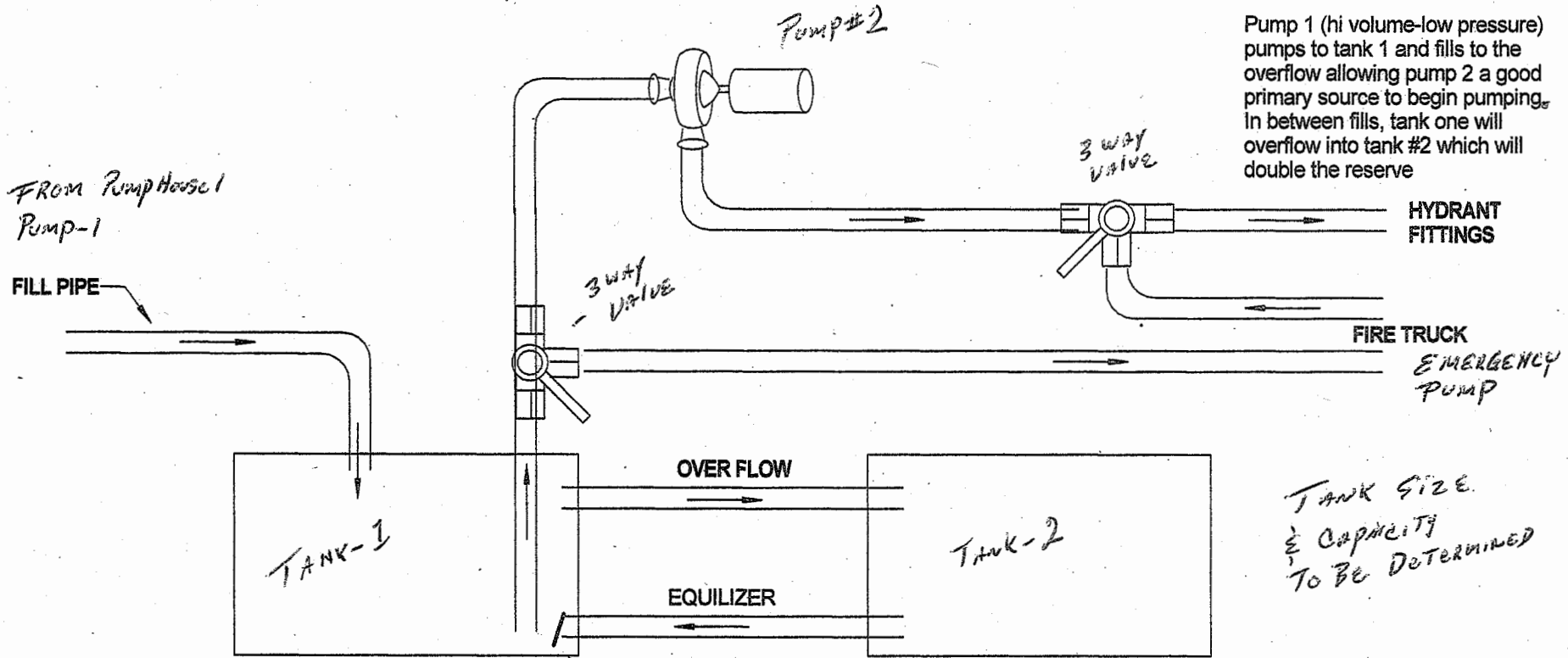
This system would be central located, close to power lines, easy access for trucks easy turn around at the community center not subject to parking problems and a good supply of clean water. Hopefully an agreement could be reached with Versant to lease a sub terrain plot for a tax break or other kudos and the same with the pond' other land owners. This would free up the present reservoir site to be dismantled and allow the state to replace the stone culvert.

### DEER ISLE RESERVOUR

sub title:	expanded explanation	date:	8/6/23
title:	DIFD Reservoir explained	drawn by:	RMB

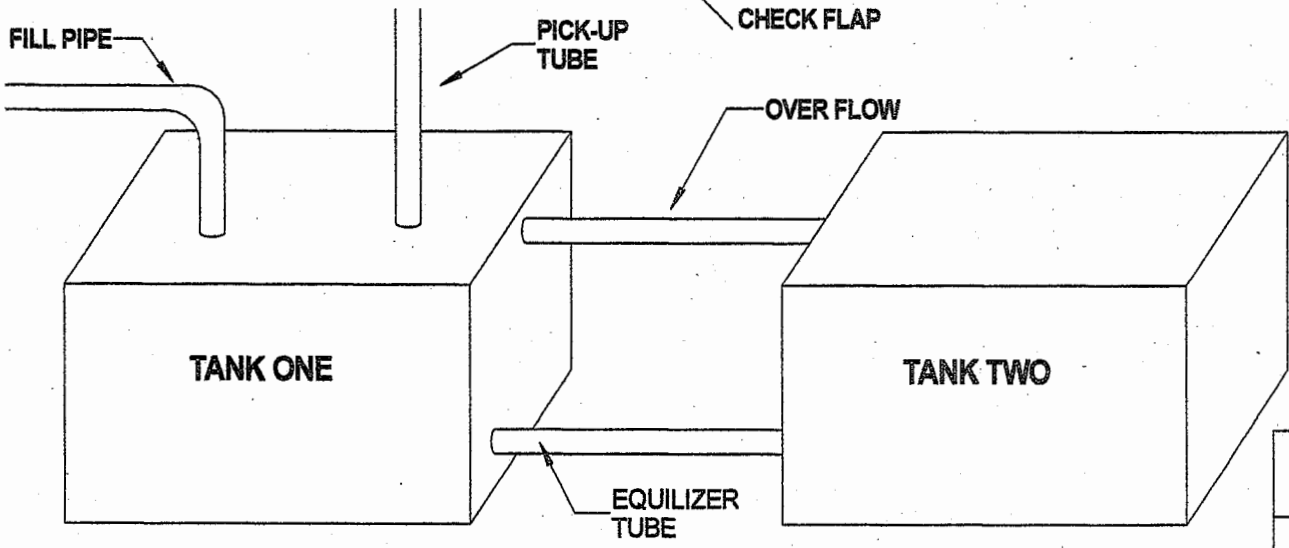


<b>DEER ISLE RESERVOIR</b>	
scale: 1/8" = 1'	date: 8/4/23
title: WATER SUPPLY	drawn by:
file: DIED Reservoir 01	



Pump 1 (hi volume-low pressure) pumps to tank 1 and fills to the overflow allowing pump 2 a good primary source to begin pumping. In between fills, tank one will overflow into tank #2 which will double the reserve

TANK SIZE & CAPACITY TO BE DETERMINED



# DEER ISLE RESERVOIR

sub title:	WATER SUPPLY	date:	8/5/23
title:	DIFD RESERVOIR 02	drawn by:	RMB

2022

# ANNUAL REPORT



ISLAND HERITAGE TRUST

---

420 Sunset Road, Deer Isle, Maine 04627  
[www.islandheritagetrust.org](http://www.islandheritagetrust.org)



Edgar M. Tennis Preserve ^

# SENSE OF PURPOSE

---

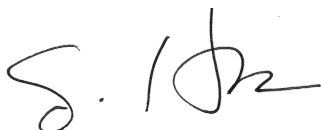
In early 2022 Island Heritage Trust (IHT) shared the news of our successful accreditation by the Land Trust Accreditation Commission, the culmination of years of effort by the Board of Trustees, multiple Executive Directors, and staff. The year-round staff journeyed to New Orleans in September 2022 for the National Land Trust Alliance Conference, RALLY, to be celebrated amongst the other Class of 2022 accredited and renewal land trusts and join our colleagues in a robust professional development opportunity. The team brought back an enlivened sense of purpose, new ideas for solving old problems, strategies for implementing best practices in our work, and perhaps most importantly: a feeling that IHT is on par with our peers and even a leader in some areas. We may be one among many regional land trusts across the country, but rest assured that we are doing exemplary work on Deer Isle and beyond!

We learned at RALLY that 2022 was another banner year for land conservation, with a strong reminder that local actions can have global impacts. Over 61 million acres of land were conserved by 1,281 individual land trusts across the country, including over 6 million acres in Maine by 72 currently active land trusts. IHT plays a critical role in this success by paying close attention to the specific needs in our region in the context of the larger whole.

And what are those specific needs in our area? We're considering what climate change and sea level rise mean for Deer Isle and the lands we steward. We need to understand that land and infrastructure – like the Deer Isle Causeway – must be reassessed. What are the greatest land use needs of our community? We're thinking about cultural and economic use and options for furthering our mission beyond typical conservation methods, such as fostering neighborhood coalitions to support the health of their adjacent woodlots and tackle harmful invasive species. We must provide a truly inclusive opportunity to access our services, with more open space and educational programming, and adapt our current systems to better welcome all who want to participate. At IHT, we are pulling on these various threads to see where they take us and are hopeful to be a vital part of this resilient community into the future.

While we look back on 2022 with gratitude for all our successes and look ahead with excitement to share new conservation projects in the works, we always come back to the present – the joy found by families splashing in the tide, the awe found in the bioluminescent sparkle of a late summer evening, and the quiet calm found by walking through the woods. We take comfort in knowing we are working to care for many of the things that make this place special and that it wouldn't be possible without all your support.

Thank you.



**DIANA HARTNETT**  
Board Chair



**JULIA ZELL**  
Executive Director



## ACHIEVEMENTS

# HIGHLIGHTS FROM 2022



1. Jessica Crandell



2. Stewardship Boat



3. Mickie Flores



4. Scott's Landing

**1.** We were once again awarded a recipient of the Richard G. Rockefeller Conservation Internship program through Maine Coast Heritage Trust, providing us funds to take on a paid intern for ten weeks of the summer. Jessica Crandell, who has family ties to Deer Isle, was integral to all aspects of IHT's success during Summer 2022. She has since graduated from Slippery Rock University and will fulfill her dream of moving out West and working for a land trust.

**2.** We acquired our first boat for stewarding our offshore islands and a new stewardship truck after our previous one died. Successful "Giving Tuesday" campaigns funded both of these efforts. Now our Stewardship Director and Summer Stewardship Assistant have the tools to access all of IHT's conserved lands and ensure proper monitoring and annual care.

**3.** Our Board of Trustees Secretary, Mickie Flores, received a Presidential Award for Excellence in Mathematics and Science Teaching. Recent efforts resulted in a Rethinking Remote Education Ventures grant to complete an accessible boardwalk and Outdoor Classroom expansion for the school's nature trail.

**4.** We were awarded a Land and Climate Grant by the Open Space Institute and Land Trust Alliance to embark on a one-year pilot project at Scott's Landing Preserve to provide us, and other land trusts around the country, with a dynamic template for re-envisioning how to highlight indigenous voices, particularly around climate change, into our communications on the land and with each other. We are just beginning this learning journey and look forward to sharing more as we grow.

# THANK YOU TO OUR 2022 DONORS

## \$25,000+

Anahata Foundation  
Anonymous

## \$10,000-\$24,999

Marnie & Ken Crowell  
Joy Kleeman  
Judy & Ray McCaskey  
Bill Wiegmann  
Anne & Luke Williams

## \$5,000-\$9,999

Susan Block  
Joni Banks & Steve Cox  
David Crutcher  
DeeDee & Jeff Hartnett  
Janet & John Fuller  
Susan & Mark Robinson  
Joan & Pablo Sorensen  
Anonymous  
Nancy & Kent Van Zant

## \$1,000-\$4,999

Jim Albrecht & Susan Vroman  
Mike Allen  
Julia Andrieni &  
Robert Phillips  
Anonymous  
Suzanne Barksdale  
Elizabeth Beall  
Rebecca Bushong &  
Charles Beasley  
Roland Boutwell  
Cecily L. Cassum  
Deborah Claffin &  
Eric Marshall  
Malinda & Jonathan Curtis  
Alice Davison  
Brian DeFiore &  
Merrilee Heifetz  
Amelia & James Donahey  
Elke & Joe Dorr  
Anonymous  
Chantal & Frank Dukette  
Jean & Barrett Flanders  
Marianne Gabel &  
Donald Lateiner  
Betsy & Mark Gabrielson  
Carol & Stephen Goetz \*  
Melinda & Frank  
Hamel-Graziano  
Michael Hanrahan  
Anita & Bill Haviland  
Anonymous

Victoria Hertz &  
Rod Greenwood  
Anonymous  
Karen & Ned Hill \*  
Emily & Tim Hoechst  
Ann Hooke  
Mary & Richard Howe  
Sallie & David Jones  
Linda Kleeman &  
Jeffrey Oringer  
Prue Larocca  
Diane Bulpett &  
Ulysses Lateiner  
Ms. Marta Jo Lawrence  
Laurie & Peter Maffly-Kipp  
Sally McConnell \*  
Nancy & Al Merritt \*  
Kathy & Carl Morgan  
Lucy & John Myers  
J Kenneth Nimblett  
Catherine & Brendan  
O'Dwyer  
Jane & Woody Osborne \*  
H. Bradlee Perry  
Gail & Jim Plotts  
Jane Pugh  
Katrina & Tom Randall  
Amy & Terry Real  
Bunny & Dan Reardon  
Katherine & William Reardon  
Hal & Elizabeth Reynolds  
Jackie Beard-Robinson &  
Richard Robinson  
Janette Tubb & Mark Rogers  
Shari Levine &  
Andy Rosenthal  
Julie & Peter Roth \*  
Elizabeth Santamaria  
Susanna Schaum &  
Ron Schwartz \*  
Peggy Shaffer & Ben Jacks  
Anna Slater  
Dale & Michael Steinharter  
Megan Sturges &  
Lincoln Draper  
Deb Suran  
Josephine & Philip Teverow  
Deanne & Thomas Urmay  
Damon Wack  
Dr. Andrew Walkling  
Ms. Jean Welch  
William & Barbara Whitman  
Ben Wootten  
Barbara Wright  
Thomas K. Yoder  
Liz & George Zentz

## \$500-\$999

Kathleen & Sherwood  
Anderson  
Muriel T. Asbornsen  
Sue & Dave Bayley \*  
Sue & Roger Bergen  
Deirdre Burns &  
William Hoynes  
Daniel E. Cassidy  
Wendell & Sue Chamberlain \*  
Barbara & Ted Crabb  
Carol deGraffenreid  
Patricia Donahue  
Pam Driesell & Joe Loveland  
Nancy Frederick  
Ms. Susan Gabrielson  
June LaCombe & William Ginn  
Alicia Condon & William Gross  
Michael Hadley  
Connie & Doug Hamel  
Debbie Weil &  
Samuel Harrington  
Kathleen & Herb Janick  
Deb & Rex Joffray  
Suzanne Joffray  
Amy Jordon & Roger Block \*  
Carolyn & Kenneth Kammeier  
Sally Keefe & Peter Webber \*  
Leslie Knowlton  
Macy & Bob Lasky  
Stephanie & Scott Miscione  
Michael Moncavage &  
Mary Taylor  
John Murphy  
Kitty Porto & Emily Evans  
Christine & Dick Reppucci  
Silvia Gonzalez Roman \*  
Cleo Wilson & Robert Roth  
Ellen & Steve Rowan  
Anne Scarff & Peter Snedecor  
Christopher Scott  
Ann Senter  
Kyra Alex & Renee Sewall  
Mark Shepard  
Lee Strewsbury  
Hilary Smith  
Elizabeth Jewett &  
Stephen Teach  
Julia & Robert Walkling  
Deborah Jackson Weiss &  
Scott Weiss  
Ms. Caroline Werth  
Al & Julie Wurglitz

## \$250-\$499

Marjorie & James Anderson  
Julia Andriene  
Serena Arnett  
Tres & Nina Arnett  
Alix & Scott Bacon

Roselle & Peter Barbour  
Christopher Bever  
Steven & Susan Bralove  
The Buroker Family  
John Carew \*  
Christina Carter  
Page & Jack Carter  
Lynn Cherry & David Asch  
Elizabeth Nichols &  
Bo Chesney  
Barbara & James Chesney  
John Cogswell &  
Richard Hutton  
Nina Dayton & James Boster \*  
Blaise de Sibour  
Anonymous  
John Edwards  
Christina Fitz \*  
Timothy Flight  
Michele Flores  
Guy Gabrielson  
Jacqueline Michaud &  
Martin Gellert  
Carole Glasser  
Kent Heine  
Jean & Dud Hendrick  
Elizabeth V. Hitz  
Becky & Sam Howe  
Lucas Hrabovsky \*  
Catherine Hutchinson  
Michael Iauch  
Jean & James Jackson  
Judith Keenan  
Drew & Becky Kellner  
Rebecca & Gilbert Kerlin  
Susan Webster &  
Stu Kestenbaum  
Thomas & Linda Kimbrell  
Michele & Graham Kinsman  
Kathy Kling & John Fearey  
Annie Kneeder  
Lynn & Ed Kneeder \*  
Gloria & Rodney Knowlton  
Martha Levert  
Janice Libby  
Chris & George Linkletter  
Rochelle & Bruce Lipschultz  
Margie Litman  
Cherie Mason  
Martha Massey  
Lindsay & David Mather  
Eileen McCormack  
Bryce McKenzie  
Melissa & Robert Mial  
Roza & Thomas Mueller  
Joanne Mallowney  
Walt Reed &  
Gwyn Firth Murray  
John Ollman  
Christine Pfaff  
Anne Plimpton

Ann & Eliot Powell  
 Mary & Ron Pressman  
 William Ritchie  
 Lynne Rockwood &  
 Martin Scully  
 Adair & Jim Ruff  
 Ms. Mary Allison Rylands  
 Deborah Orrill &  
 Blair Sanders  
 Susan & John Seater \*  
 Elizabeth & Franklin Silver  
 Scott Smiley  
 Ron Stegall  
 Ms. Nancy Taras  
 Deborah Terreault  
 Rob Thawley &  
 Mandy Maneval  
 Susan & Eric Toder  
 Dylan Tonry  
 Tracey & William Weil  
 Mrs. J Rotunda &  
 Mr. M Weinberg  
 Kay Petersen & Woody Weiss  
 Sandra & Howard Weston  
 Jean & Gerald Wheeler  
 Walter Wheeler \*  
 Nancy & John Wilson  
 Jessica Witham \*  
 John Wolfe & Ruth Lamdan  
 Sue Kirincich &  
 Chuck Wooster  
 Janet & Fred Zell

**\$100-\$249**

Wendy Alpaugh &  
 William McDonnell  
 Marianne Alweis  
 Lanny & Bill Anderson  
 Miriam Antich  
 Birgit Asbornsen & Luis Len  
 Rich & Diane Audette  
 Betty Baer  
 Lester Barber  
 Julia Barringer  
 Nancy & John  
 Bartley-Matthews  
 Gaylen & Jeffrey Baxter  
 The Berry Family  
 Cyrus Blake  
 Susan & Mark Bradford  
 Stanley Brager Jr.  
 Ely Brown  
 Robert Burns & Gary Schiro  
 Lisa Chang & William Buzbee  
 George Cain  
 Ardis Cameron  
 Linda & Tom Carmichael  
 Carol & Bob Carter  
 Susan & David Cathers  
 Susan Chambers

Ms. Barbro Chapman  
 Cloe Chunn &  
 David Thanhauser  
 Julia Clayton  
 Lee Cline  
 Gail Coad & Jim McGinness  
 Elizabeth Compton  
 Catherine Condray  
 Bruce Cory  
 Walker Covin  
 Lisa Crispin  
 Karen Crowley & Mark Joyce  
 Deborah & Robert Cummins  
 Gordon Dabney  
 Martha & Nathan Dane  
 Aaron Davidson  
 Ms. Whitney Davis  
 Harriet & Charles Day  
 Emil Decou  
 Martha & Doug Degen  
 Sally deGozzaldi &  
 Chris Knowlton  
 Natalie Jones & Joe Dembeck  
 Wendee & Todd Devenish  
 Robert DiFrancesco  
 Anne & Dana Douglass  
 Jan & Mike Douglass  
 Virginia Drewry  
 Linda & Peter Dunne  
 Eliza & Timothy Earle  
 Robert Elfstrom  
 Sandy Phoenix & Phil Ekin  
 Carolyn Evans  
 Wendy & Larry Evans  
 Elizabeth Everdell  
 Benjamin Eysenbach  
 Nancy & Bob Faesy  
 Elizabeth Ferry  
 George Fields &  
 Pam Aubuchon-Fields  
 Sallie Findlay & Gene Nelson  
 Eve & Harry First  
 Ann Flewelling & Charlie Read  
 Theodore Foot  
 Roger Forman  
 Marion & Dan Foss  
 Julia & Thomas Fredericks  
 Marilyn & Peter Fuchs  
 Elaine & Tom Gagner  
 Rachel & Donald Gallant  
 Noi Garland \*  
 Sally & Ken Gillett  
 Linda & Philip Glaser  
 Julia Goodall  
 Steve Goodwin  
 Alice & Donald Gottschall  
 Ted Goudie  
 Barrett W. Gray  
 Nancy & Roger Greene  
 Grace Gregor

Bill & Jo Anne Greiwe  
 Kassie Grey  
 Toni Griskivich  
 Pat & Ron Gross \*  
 Susan & John Gross  
 Andy Grundberg &  
 Merry Foresta  
 Michael Gunderson  
 Elizabeth Haire &  
 Chris Gunner  
 Jan Clough & Ara Guzelimian  
 Ann & George Hackl  
 Barbara Haring  
 Doug Harris  
 Maureen & Steve Harris \*  
 Page Hawk  
 Emily Hawkins  
 Beverly & Havilah Hawkins \*  
 Lisa Whittaker Haynsworth  
 Scott Haynsworth  
 Kathy Page & Alan Hein  
 Sharon & Jon Hellstedt  
 Helene Hetrick \*  
 Bradley Higgins \*  
 Elizabeth Hill  
 Mary & Frederick Hitz  
 John & Sara Hoblitzell  
 Richard Hoeksema  
 Anne Holman  
 Sarah Holmes &  
 John Morris, Jr.  
 Ellen Howe  
 Frederick Hunt &  
 Mary Macvey  
 Marissa Hutchinson &  
 Roger Olsen  
 Ms. Nicole Johnson &  
 Ms. Barbara Lundblad  
 Dr. Virginia Kaufmann  
 Caroline Kearney  
 John & Cathy Keenan  
 Kay Haran &  
 Dr. Otto Kernberg  
 Connie King  
 Kathryn & Christopher Knight  
 Laura Kuhl & Ben Lakin  
 Stefanie Lamb  
 Mardie Lange  
 Laura & Don Lecker  
 Thomas Leigh  
 Gigi & Dana Leonard  
 Mr. Larry Lesieur  
 Robin Levin  
 Julie Meranze-Levitt &  
 Jerry Levitt  
 Scott Little  
 Margie Loberg Cyr & Mark Cyr  
 Susan Lodge  
 Christian Long &  
 Susan Leicht Long

Dr. Kate Lorig  
 Charles Lovell  
 Deborah De Witt &  
 Charles Lucas  
 Nina Lusterman  
 Rebecca Lyford &  
 John Newman  
 Diane & James Lyon  
 Deirdre Mageean  
 Richard Maier  
 Devra Marcus  
 Judy Marden  
 Leslie Mark & Mark Eisemann  
 Connie Mayo  
 Auden McClure &  
 Paul Hanissian  
 Mrs. McLean  
 Judith K. &  
 S. Sterling McMillan, III  
 Dr. & Mrs. Thomas Mehalic  
 Cindy Mervis  
 Anna Miller  
 Lou Ann Miller  
 Dr. Sue & Paul Miller \*  
 Lorenzo Mitchell  
 Sally & Billy Mitchell  
 Mr. Carl Monk  
 Ms. Nancy Moore  
 Sandra Moore &  
 Mark Felsenthal  
 Mrs. Susan Mueller  
 Linda & Eric Murphy  
 Kyle Murphy \*  
 Mary Murray  
 Peg Myers  
 Amelia Nadilo  
 Bonnie Nelson Schwartz  
 Harriet & Gerry Nottingham  
 Sharon O'Neill &  
 Curtis Kasefang  
 Larissa Ostrovsky  
 Judy & Sam Ostrow  
 Ellen Shapiro & Carol Page  
 Linda & David Parker  
 George Pazuniak  
 Jane & Jack Phillips  
 John C Phillips  
 Betty & Larry Pickering  
 Stewart & Julie Burger Pierson  
 Andrew Place  
 Dr. Charlotte Podolsky  
 Ms. Elizabeth Porter  
 Linda & Don Powell  
 Rosemary Presnar  
 Elizabeth Randall  
 Lonnie T. Ray  
 Linda Raynes  
 Susan & George Reardon  
 Tom & Mary Kay Ricks

Katy Rinehart &  
Herby Carter \*

Peggy & Paul Roden  
Grace Roemer  
Susan & Clifford Rogers  
John Rohman  
Marilyn & Mitchell Ross  
Shelby Nelson &  
Lewis Rothberg  
Richard Russell  
Joanne Draghetti &  
Barry Salussolia  
Patricia A. Sandilands  
Erika Sanger  
Mr. Robert Saunders  
Jonathan Schrag  
Christopher Shanklin  
Sally & John Shanklin \*  
Charline & Tony Shaw  
Carol & John Shaw  
Ann Sheehan  
Ms. E Shockro  
Constance Simo Rosenblum  
Margaret & Michael Singer  
Valerie Smith  
Pascale Soriano  
Barbara Spalding \*  
Hugh Stevenson  
Joey Storaska  
Beth Sullivan Woods  
Mrs. Gail Sytsema  
Kristen Szydlowski  
Lisa Anne Taylor  
Owen Teach \*  
Joann & Scott Thurston  
Cara & J. Miller Tobin  
Kevin Tompkins  
Ms. Diana Turner \*  
Martha Turner  
Betsy Gaiser & Todd Tyson  
Wendy Valerius  
Tracy & Peter Van Buskirk  
Tressa Versteeg \*  
Richard B. & Cynthia W. Waitt  
Dr. & Mrs. Julian Waller \*  
Catherine & Andrew  
Washburn  
Cynthia & J. Stroud Watson \*  
Rebecca Watson  
Paul Wehrman  
Diane Weinstein  
Elizabeth Weissmueller  
Ellen & Roger White  
Doug Wilson  
Judy & Norman Wilson  
Jeremy Wintersteen  
Morgan Witham \*  
Nicholas Witte  
Tenley Wurglitz  
Fred Yost

Steven Zacharius  
Annie Guppy & David Zachow  
Reina Schratte &  
Rufus Zogbaum

### Up to \$99

Esther Adams  
Jean Adams & Patrick Hickey  
Robin Alden & Ted Ames  
Susan Alexander  
Linda & Bob Allen  
Ms. Nancy Allison  
Tony Aman  
Jeanne & Carlos Amaral  
Glenda Arentzen  
Heidi Armster &  
Dean Sanderson  
Debbie Bamberger  
Suzanne Van Wye &  
Richard Barnes  
Abby Barrows & Ben Jackson  
Allan Beatty  
Anne & Peter Beerits  
Ellen & Chris Beerits  
Martha & Mark Bell  
Adrienne Benson  
Anne Bialobrzkeski  
Karen & Mark Bilak  
Carol & Hubert Billings  
Jill Linzee & David Bilski  
Kenneth Bilski  
Ms. Virginia Blais  
Bonnie Bochan &  
Guillermo Diaz  
Sue Booher  
Susan Borland &  
James Turner  
Lynn & Jon Braff  
Ann Brayton  
Mary Anne Broshek  
Phelps Brown  
Keith Brugger  
Jeff P Bussells &  
Maureen E McGowan  
Dawn Cacciotti  
Babette Cameron  
Richard Campbell  
Alissa Churchill &  
Thomas Carley  
Constance Carroll  
Lynda & Mark Carter  
Bonnie Chase  
Ms. Frances Clark  
Jane Coakley  
Pierian Piraeus & Peter Collier  
Kellie & Bob Coombs  
Shannon & Greg Corliss  
Betsy Corning  
Karen Hanish & Jay Corvan  
Janice Cotton

Kathy Crawford  
Ms. Judy Curtis  
Ms. Charlotte Cushman  
Ed David  
Jackie & Darwin Davidson  
Lisa & Bill Davis  
Stephen Davis  
Ms. Rena Day  
Suzanne & David Decrow  
Molly Dellaroman &  
Tim Skillin  
Holly Devaul  
Edith Dibartolo  
John Dice  
Amy & Spencer Dickinson \*  
Adell Donaghue &  
Jane Rothchild  
Gregory Doyle  
Evelyn & David Duncan  
Valerie & Peter Duncan  
Elizabeth Duncombe  
Lynn Duryea  
Joyce & John Dwyer  
Julie & Stuart Dwyer  
Rose Ebsworth  
Joan Eischen  
Ward & Jane Eisinger  
Sharon Ellard  
Joanna Hefferen &  
John Epstein  
Victoria & Dave Erker  
Gusty Lange & Steve Ettlinger  
Carole Ann Fer & Ellen Wieske  
Robert Ferraro  
Sarah & Jeffrey Flause  
Alan & Curtis Flowers  
Jean Fogelberg  
Carolyn & David Friedell  
Wally Garroway  
Willard Gilmore  
Jane Williams &  
Richard Giordano  
Leslie Goode  
Amy & George Gorman  
Ms. Margaret Graham  
Stephen Greenberg  
Susan Greenlaw  
Kathleen Greiwe-Crandell  
Christine Skwiot &  
Larry Gross  
Carolyn Hanke  
Dr. Nora Hanke  
Lisa Hanley  
Ms. Cathy Hart  
Val Haskell  
Harold Hathaway, III  
Nancy Hay  
Richard Hewitt  
Frances & Tim Holbrook

Janice & John Holmblad  
Lyn Littlefield Hoopes  
Martha Horner  
Kathy Horourke  
Mary Lou & Lewis Horzempa  
Linda & Dana Hunter  
Stan Ingram  
Kathleen Janick  
Peter Jaquette  
Stratton Jaquette  
Harold Jensen  
Louise Johnson-Toth &  
Greg Toth  
Jeanine & Lawrence Jones  
Soriano Jose  
Kathy & Marshall Kaiser  
Christina Kales  
Jeff Kantorowski  
Ms. Cheryl Karoly  
Karin Kasparian  
Michele Keane-Moore  
& Christopher Moore  
Carolyn Keefe  
Miriam King  
Mr. & Mrs. Robert Knowlton  
Marcia & Vaino Kola  
Ms. Darlene Lepoff  
Linda & Steve Lindsay  
Dean Lohmeyer &  
S. Maria Miller Lohmeyer  
Andrew Mackie  
Susan & Peter March \*  
Jean Martin  
Lyn W. & Paul A. Mayewski  
Jennifer Mayo  
Sean McCarthy &  
Sheryl Gofman  
Jim McGlynn  
Joan McVey  
Carol Merrifield  
Frances Thompson &  
Eric Benke  
Sarah Kip Miller  
Victoria & William Miller  
Susan Montgomery  
Anonymous  
Mrs. Judith Moore  
Melanie Moore  
Mr. & Mrs. Howard R. Morgan  
Anna Morgan  
Mr. & Mrs. Ernest Moritz  
Ogden Nackoney  
David Nason  
Mary & Dick Newman  
Barbara & Hugh Northup  
Patricia O'Brien  
Judith & Tom O'Callaghan  
Timothy O'Connor  
Mr. Tony Oja  
Susan & Brent Oliver

Jacqueline & David Orsmond  
 Susan Ostertag  
 Aaron Pench  
 Sandra Phoenix  
 Clara Pickering  
 Penny Plumb  
 David Porter  
 Holly, Bill & Natalie Posner  
 Ms. Robin Reid  
 Kim Ridley  
 Susan Robertson  
 Dominic Rodgers  
 Jane Rosinski &  
   Gordon Russell \*  
 Matthew Sanders  
 Debra Schad  
 Kristin Schardt &  
   Martin Lodish  
 Permelia & David Sears  
 Gregory Searson  
 Jean Seiler  
 Herbert Seltz  
 Rebecca Shepard  
 Martha Wakefield &  
   Philip Shepley  
 Carl & Lois Simmons  
 Ann & James W. Simmons  
 Karen Simms  
 Pam Smith  
 Sherry Smith  
 Deborah Smullyan  
 John & Cathy Snowden  
 Roslyn & Peter Sommer  
 Timothy Stackhouse  
 Jenni & Gary Steele  
 Gina Podesta &  
   David Stephens  
 Ellen & Tom Stevenson  
 Sallie Strong  
 Janie & Bill Sturtevant  
 Maya Sutton-Smith  
 Barbara & David Thompson  
 Terri & Stephen Titcomb  
 Anne & Stanley Trecker  
 Pamela Turner \*  
 Jane Tyler  
 Jean Vadeboncoeur  
 Diana Van Alstyne  
 Kathy Varadi & Kim Turner  
 Kathryn Vice  
 Harry Vickerson

Oscar Volpe  
 Daniel Wagner  
 Carol Walsh  
 Joseph Ward  
 Joni & Edward Wardell  
 Ann Watt  
 Ransome Weis  
 Daniel Werner  
 Mary Jane Whaley  
 Thomas Whittier &  
   Christine Hedges  
 Sara Wilbur  
 Daniel Willeford  
 George Williams  
 Ginger & John Williams  
 Oggie & Peggy Williams  
 Erika Wollam Nichols  
 Karen & Richard Woodbridge  
 Ellen Young

### Memorial Gifts

Abigail & Aaron  
 Ellie Allen  
 Thomas H. Barringer  
 Robert Brannen  
 Joe Bruin  
 Beverly Cairns  
 E. Roderick Cline  
 Joseph Condon  
 David Crutcher  
 John Culberston Jr.  
 Curtiss Martin  
 Richard (Pete) DeLone  
 Julia Clark Downs  
 Douglas Frost  
 John Grant  
 Valmore "Jim" Greenlaw  
 Valmore (Jim) &  
   Nellie Greenlaw  
 Toni & Stan Griskivich  
 Caleb Happ  
 Roger Hooke  
 Delight & Gerry Immonon  
 Alexander Kasparian  
 Ken Kleeman  
 Mike Little  
 Patricia McCormack  
 John Merrifield  
 Jon Metcalf  
 Stanley Myers  
 Virginia Perry

John & Frances Peterson  
 Fran, Pete & Hawley Peterson  
 John (Pete) Peterson  
 Janice Place  
 Ruth Powell  
 Jean & Don Ramaker  
 Gwen 'Ginger' Reiman  
 Lyndy Rohman  
 Jennifer Russell  
 Arlie Schardt  
 Matthew Schuler  
 Bonnie Schwartz  
 Bob & Skip Smith  
 Mr. Robert Smith  
 Sonny Stinson  
 Pat Stoneburner  
 John Sullivan  
 Michael Turner  
 Norma Versteeg  
 Norma Sellers Vickerson  
 Julian Waller  
 Eleanor Washburn  
 Tom Wessel  
 Chris Williams  
 Mike Wood

### Honorary Gifts

Sue & Dave Bayley  
 Carol & Hubert Billings  
 Auden Cassidy  
 Teresa Fairchild  
 Lily Felsenthal  
 Michele Flores  
 Jeffrey & Diana Hartnett  
 Betsy Hodges  
 Ann Hooke  
 Leo Hrabovsky  
 F.G. Jewett Jr.  
 Iris & Hazel Kimball  
 Joy Kleeman  
 Emily McDaniel (Tynan)  
 Wendy Alpaugh &  
   William McDonnell  
 Dirigo John Edwin Mckenzie  
 Dirigo McKenzie  
 Philip & Dee Miller  
 Susan Montgomery  
 Gwyn Murray  
 Elizabeth Reardon  
 Hal & Elizabeth Reynolds  
 Jon Roemer

Alice Rogers  
 Frances Schlesinger  
 Deborah Smullyan  
 Linda & John Viertel  
 Emily & Alvah Wendell  
 Bill Wiegmann  
 Julia Zell

### Heritage Society

Ms. Nancy Allison  
 Mary Anne Broshek  
 Constance Carroll  
 Marnie & Ken Crowell  
 Lee Fay  
 Ann Flewelling & Charlie Read  
 Linda & Philip Glaser  
 Ms. Cathy Hart  
 Ann Hooke  
 Harold Jensen  
 Prue Larocca  
 Judy & Ray McCaskey  
 Sharon O'Neill &  
   Curtis Kasefang  
 Shari Levine &  
   Andy Rosenthal  
 Jean Seiler  
 Dr. Phyllis Steiner & Lois Fink  
 Gregory Trepko  
 Sandy Wachholz &  
   Dick McWilliams  
 Ian Walker



The names listed in this report reflect gifts & pledges from the 2022 fiscal year, which ended October 31, 2022.



\* Denotes **Luna Society Members**

Our Luna Society is made up of recurring monthly donors. Their pledged commitment to the Island Heritage Trust leads to sustainable support of our mission.

## Foundations

Acorn Hill Foundation  
Anahata Foundation  
Aquila Fund of the Maine  
Community Foundation  
AYCO  
Bocock/Hitz Fund at the  
Charlottesville Area  
Community Foundation  
Cassum Family Foundation  
Chestnut Street Fund  
Crutcher Family Foundation  
Elenor Stich  
Recreational Trust  
Hickrill Foundation  
Jack & Page Carter Fund  
Maine Community  
Foundation  
Mark Eisemann & Leslie Mark  
Family Fund  
Maynard Foundation  
Murphy Charitable  
Foundation  
Paul & Dina Block  
Foundation  
Pencoyd Foundation  
Phillips Family  
Charitable Fund

S. Gordon Dabney, Jr.  
Family Fund  
S. Livingston Mather  
Charitable Trust  
Samuel V & Rebecca B Howe  
Charitable Fund  
Sentinel Fund  
Shaw Family Fund  
Sheep Island Realty Trust  
Stephen & Margaret Gill  
Family Foundation  
Steven R. Bralove Trust  
Sturges-Draper Family  
Charitable Fund  
The Andrew Rosenthal  
Donor Gift  
The Loring, Wolcott, &  
Coolidge Trust LLC  
The Pencoyd Foundation  
The Rodricks Foundation  
The Tim & Emily Hoechst  
Charitable Fund  
The Vanguard Group Inc  
The Whistler Fund at the  
Chicago Community  
Foundation  
Virginia Roehrig Kaufmann  
Fund

## Business Members

Aragosta  
Bar Harbor Bank & Trust  
Barter Lumber Company  
Billion Oyster Project  
Blue Heron Wellness Center  
Blue Hill Inn  
Blue Hill Wine Shop  
Boyce's Motel  
Bridge Marketing  
Burnt Cove Boil  
Camden National Bank  
Career Key  
Dan Foss Construction LLC  
DBA Safe Arbor Tree Service  
Devta Doolan Studio  
Downeast Audubon  
Due North LLC  
Eaton Tree Company  
El El Frijoles  
Energy Futures Group  
Everdell Garden Design  
Fifield Lobster Company  
Fogtown Brewing Company  
Full Circle Printing  
Georgia Stone Industries  
Good Tide Tours  
Greenhead Lobster

Greene Ziner Gallery  
Healthy Island Project  
Island Community Center  
Island Country Club  
Island Fishing Gear  
& Auto Parts  
Land Trust Alliance  
Long Cove Sea Farm  
M.D. Joyce & Co.  
MAE  
Maine Coast Heritage Trust  
Mainescape  
Mark Bell Pottery  
Nervous Nellies Jams & Jellies  
Opera House Arts  
Osprey's Echo Sea Kayaking  
R.L. Greenlaw & Son Inc.  
Ron's Service, Sales  
& Autobody  
Sea Kayak Stonington  
Skip Eaton Paving  
& Construction  
Spruce Harbor Associates  
The Brooklin Inn  
The Christopher Group LLC  
The Island Agency  
Tomboy Construction  
Wilson Forge

## MISSION:

**Island Heritage Trust (IHT) contributes to the well-being of the island community by conserving its distinctive landscapes and natural resources, maintaining public access to valued trails, shoreline, and islands, and by providing educational programming for all ages.**

# CELEBRATING 35 YEARS

IHT celebrated its 35th Anniversary in 2022. From a fledgling idea started around a dining room table, through years of dedicated volunteer leadership and action, to where we are today – it is a remarkable journey. Our deepest gratitude goes to the many hands that have played a role in making this all happen.



Lily Pond Park ^

PROGRAM SPOTLIGHT:

# ENVIRONMENTAL EDUCATION

2022 projects included citizen science work and helping to expand the School Nature Trail by building a second outdoor classroom on the trail. Being outdoors during the school day calms students' minds and sharpens their focus, allowing them to learn in new ways. Students now have more room, and the trail's boardwalks are broader, creating greater accessibility for limited mobility visitors.

We launched the first Project Monarch in 2022, a collaboration with the Deer Isle-Stonington schools and The Garden Project. Individual volunteers from the community also helped prepare seedlings and garden beds, including the Mariners Soar! after school program. With events spanning the seasons, the efforts focus on the importance of pollinators, such as the monarch butterfly, and how anyone in the community can help support their health and habitat.

IHT's Environmental Educator, Martha Bell, continues to be present nearly every day in our local schools, and special programs such as the collaboration with Creating Healthy Oceans Project brought our environmental education from land to sea. We helped teachers, the lobster industry, and community members teach our students about climate change and the action necessary to keep plastic out of our oceans.

Education can sometimes feel intangible, but we're grateful for your support in shaping the next generation of open-minded thinkers.



School Nature Trail



Project Monarch



Creating Healthy Oceans Project

BY THE NUMBERS:

55

FIELD TRIPS TO  
IHT PRESERVES

500 +

STUDENTS  
SERVED

1,830 ft.

BOARDWALK AT THE  
SCHOOL NATURE TRAIL

## PROGRAM SPOTLIGHT:

# STEWARDSHIP

With nearly 1,500 acres of conserved land, including 21 additional offshore islands, proper stewardship requires a great deal of capacity. Thankfully, 2022 proved to be another successful year of volunteer "Trail Tuesdays," including being awarded a winner of the "Love Maine Trails Month" for *Most Volunteers and Volunteer Hours in 1-2 Project Days* for our efforts to define a path protecting sensitive beach grass and work to open a new trail on Wreck Island Preserve.

By engaging in a rooted experience nurturing the land, we find a deeper relationship with this place and how Deer Isle connects Island Heritage Trust's community worldwide. We hope you enjoy another year of getting outside and engaging with the environment. We appreciate your commitment.



"Trail Tuesdays" Crew



Wreck Island Trail Building

## "TRAIL TUESDAYS":

Island Heritage Trust's Stewardship Director, Alex Drenga, has fostered such a welcoming and engaging community of volunteers that several of the "Trail Tuesdays" crew have become committee members, and one has even joined IHT's Board.

"As an avid hiker, I have thoroughly enjoyed and appreciated the many beautiful IHT preserves on the Island and in the bay. I was thrilled to join a robust group of volunteers who gather every Tuesday to work on the various trails. I have learned a great deal through my involvement with IHT: from conserving habitats for wildlife to providing educational programs for all ages. After two years, I'm excited to expand my involvement with IHT by becoming a member of the Board of Trustees."

- Catherine Washburn

## IT TAKES A VILLAGE:

**2,100 +**  
VOLUNTEER  
HOURS

**\$55k +**  
VALUE OF  
IN-KIND TIME

**30 +**  
STEWARDSHIP  
VOLUNTEERS





# IHT PRESERVES

## PRESERVES OPEN FOR USE:

1. Bowcat Overlook
2. Causeway Beach
3. Church Land
4. Crystal Cove
5. Lily Pond Park
6. Lisa Tolman Wotton Nature Preserve
7. Pine Hill
8. Reach Beach at Gray's Cove
9. Scott's Landing
10. Settlement Quarry
11. Shore Acres

## CO-MANAGED PRESERVES:

12. Barred Island  
*The Nature Conservancy*
13. Crockett Cove Woods  
*The Nature Conservancy*
14. Holt Mill Pond  
*Town of Stonington*
15. Edgar M. Tennis Preserve  
*Maine Bureau of Parks and Lands*

## OFF-SHORE ISLANDS:

16. Bradbury Island
17. Carney Island
18. Whig Island
19. Polypod Island
20. Mark Island
21. Wreck Island
22. Round Island
23. Millet Island



Barred Island ^

4

PRESERVES CO-MANAGED BY IHT

21

MILES OF PROTECTED SHOREFRONT

21

OFF-SHORE ISLANDS CONSERVED BY IHT

25

PRESERVES OWNED BY IHT

38

CONSERVATION EASEMENTS

1,450

ACRES OF PROTECTED LAND

# 2022 FINANCIALS

With gratitude, 2022 was another solid financial year. Net income for 2022 was \$160,301, an increase of 44 percent from the prior year, and our revenue increased by 25 percent. Contributions were \$531,000 from 714 donors, including 122 new donors. As COVID restrictions lifted, we resumed programming, including the popular "Wings, Waves and Woods" event in the spring, which is reflected in our revenue.

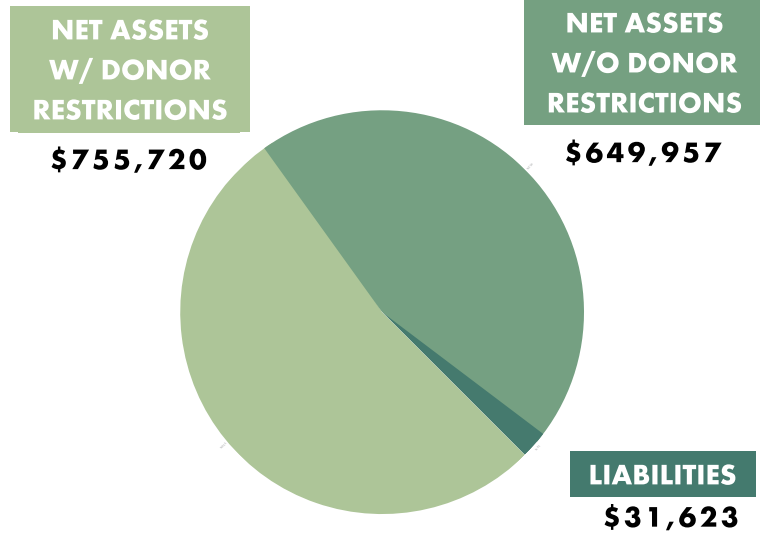
Expenses increased by 20 percent in 2022 and totaled \$470,518. 62 percent of our total expenses supported programs, including purchasing a new stewardship truck and boat. Management expenses also increased as we were fully staffed and began paying health reimbursement benefits.

Our Total Net Assets totaled \$1,437,300, down 3 percent from 2021. Our investment portfolio of donor-restricted and unrestricted funds was \$835,929 at the end of our fiscal year, a decrease of 17 percent from the prior year due to market declines. It has since recovered.

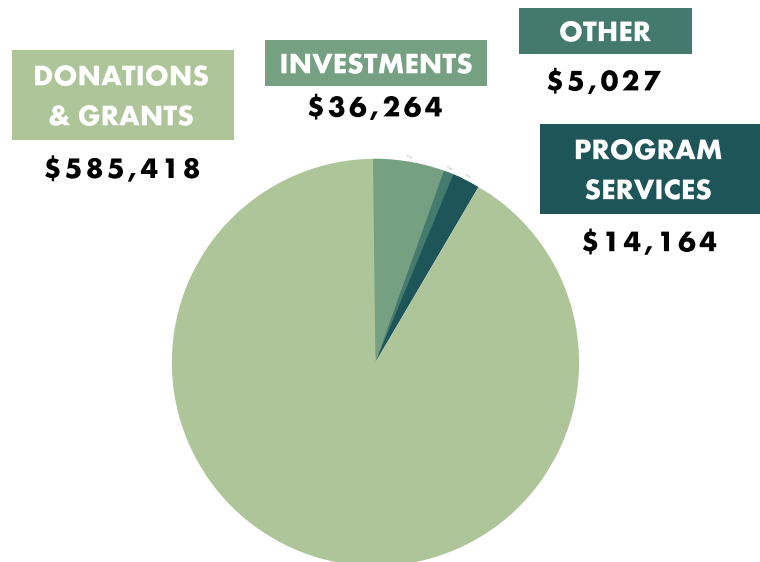
In 2022 we set aside funds to repair the Heritage House, our headquarters. This work provides needed maintenance and makes the building a safer and more attractive workspace for staff and volunteers. Future plans include renovating the barn for year-round use, including lectures and programming.

We were awarded national accreditation in early 2022. Financial planning played a big part in the application process, which required thorough documentation of our financial position and needs. Thanks to the generosity of supporters, we established a board-designated fund in 2022 to meet our future obligations.

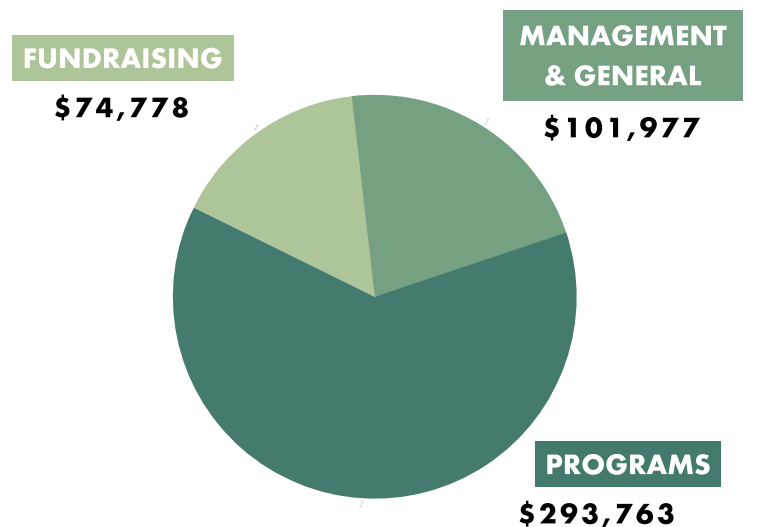
## TOTAL LIABILITIES & NET ASSETS: \$1,437,300



## TOTAL REVENUE: \$630,819



## TOTAL EXPENSES: \$470,518





# STAFF

**Julia Zell**, Executive Director

**Martha Bell**, Environmental Educator

**Alex Drenga**, Stewardship Director

**Pat Gross**, Bookkeeper

**Jacob McCarty**, Development Associate

**Terry Real**, Summer Stewardship Assistant

**Noël Ruth**, Outreach Manager

# BOARD OF TRUSTEES

**Diana Hartnett**, Chair

**Bill Wiegmann**, Past-Chair

**Karen Hill**, Treasurer

**Mickie Flores**, Secretary

**Dave Bayley**, Board Member

**Elke Dorr**, Board Member

**Anna Goff**, Board Member

**Jeff Hartnett**, Board Member

**Woodley Osborne**, Board Member

**Catherine Washburn**, Board Member

**Douglas Wilson**, Board Member

# CONTACT

**Address:**

PO Box 42

420 Sunset Road

Deer Isle, Maine 04627

**Phone:** 207-348-2455

**Website:** [www.islandheritagetrust.org](http://www.islandheritagetrust.org)

 @islandheritagetrust

 [facebook.com/islandheritagetrust](https://facebook.com/islandheritagetrust)



ISLAND  
HERITAGE TRUST  
PO BOX 42  
DEER ISLE, ME 04627

**PRINTED ON 100% RECYCLED PAPER**



*Open Space*  
*Open Minds*

Causeway Beach ^  
Front Cover: Barred Island ^